



NPERS

Nebraska Public Employees
Retirement Systems

2010 ANNUAL REPORT

TO THE LEGISLATIVE RETIREMENT COMMITTEE



Nebraska Public Employees Retirement Systems

■ 2010 Annual Report to the Legislative Retirement Committee

Authority: Nebraska State Statutes section 84-1503(3)

Public Employees Retirement Board:

Denis Blank, Chair
State Member

Glenn Elwell, Vice Chair
Patrol Member

Janis Elliott, School Member
Mark Shepard, School Member
Randall L. Rehmeier, Judge Member
Richard Wassinger, County Member
Don Pederson, Member-At-Large
Elaine Stuhr, Member-At-Large
Jeffrey States, Ex-Officio Member

Nebraska Public Employees Retirement Systems:

Phyllis G. Chambers, Executive Director
Randy Gerke, Deputy Director

1221 "N" Street, Suite 325
P.O. Box 94816
Lincoln, NE 68509
Phone: 402-471-2053
Toll Free: 800-245-5712
npers.ne.gov

■ Letter From the Executive Director

Nebraska Public Employees Retirement Systems



1221 N Street, Suite 325
P.O. Box 94816
Lincoln, NE 68509-4816
Phone: 402.471.2053
Toll Free: 800.245.5712
Fax: 402.471.9493
npers.ne.gov

March 2, 2010

Senator Dave Pankonin, Chairman
Nebraska Retirement Systems Committee
Nebraska State Legislature
Lincoln, NE 68509

Dear Senator Pankonin and Committee Members:

I am pleased to present the 2010 Annual Report to the Legislature. Last year was a year of challenge and progress for NPERS. The financial markets improved and prospects for a sustainable economic recovery look favorable. In 2009, our pension assets grew from \$6.7 billion to \$7.2 billion. The number of plan member accounts grew to a record 111,053. NPERS paid over \$410 million in benefits to members in all six plans providing financial security to thousands of Nebraska retirees.

We continue to focus on excellence in retirement administration and member services. This report highlights our 2009 accomplishments which include the successful conversion to the Nebraska Public Retirement Information System (NPRIS); the implementation and testing of NPRIS to improve our financial reporting, benefit processing and internal audit procedures; and revising our agency budget to incorporate the reductions enacted by the Special Session.

There are many partnerships that contribute to the success of NPERS. I wish to acknowledge our actuary, our record keeper, our IT vendor, and the Office of the Chief Information Officer. I would also like to acknowledge the Public Employees Retirement Board and the Nebraska Investment Council who perform their fiduciary duties with the highest level of commitment. Finally, I wish to express my appreciation to the Retirement Committee for your continued dedication and support in protecting the future of the Nebraska Retirement Systems.

Sincerely,

Phyllis G. Chambers
Executive Director

■ Table of Contents

Click on the page you want to go to.

Agency Overview.....	1
Mission Statement.....	1
Vision	1
Agency Goals	2
Agency Statutory Authority.....	2
Staffing.....	3
Organizational Structure	3
Agency Activity	4
2009 Accomplishments.....	4
2010 Action Plan.....	6
Legislation	7
Plan Status	10
Funded Status of Pensions	10
Retirement Funding	13
Retirement Plan Assets.....	14
Plan Membership Summary	15
Operating Budget Summary.....	16
Agency Services	17
Education Services	17
Additional Services.....	19
Auditing	21
Internal Control	21
Economic Value and Annual Plan Audits.....	22
Appendices	23

■ **Mission Statement**

The Nebraska Public Employees Retirement Systems recognizes the importance of a successful retirement and is dedicated to providing the highest quality service necessary to assist members in achieving this goal.

■ **Vision**

To administer the Nebraska Retirement Systems in an efficient, accurate and trustworthy manner, while providing timely service to our plan members.

AGENCY OVERVIEW

■ Agency Goals

1. To administer each retirement plan in full compliance with applicable federal and state laws.
2. To guard the integrity of our systems' assets and the accuracy of our systems' data.
3. To operate our agency efficiently and responsibly, in order to maintain the trust of our members, our plan employers, the separate branches of government and the public as a whole.
4. To provide ongoing informational and educational opportunities for our members.
5. To continuously gather data and observe benefit levels for the various plan members in order to make recommendations to policy makers from time to time.

■ Agency Statutory Authority

The administration of the Nebraska Public Employees Retirement Systems (NPERS) is vested in the Public Employees Retirement Board (PERB), per Chapter 84-1501 to 84-1513.

The laws governing each retirement plan are as follows:

County Employees Retirement Act	23-2301 to 23-2332
Judges Retirement Act	24-701 to 24-714
School Employees Retirement Act	79-901 to 79-977.03
Nebraska State Patrol Retirement Act	81-2014 to 81-2040
State Employees Retirement Act	84-1301 to 84-1331
State Deferred Compensation Fund	84-1504 to 84-1513

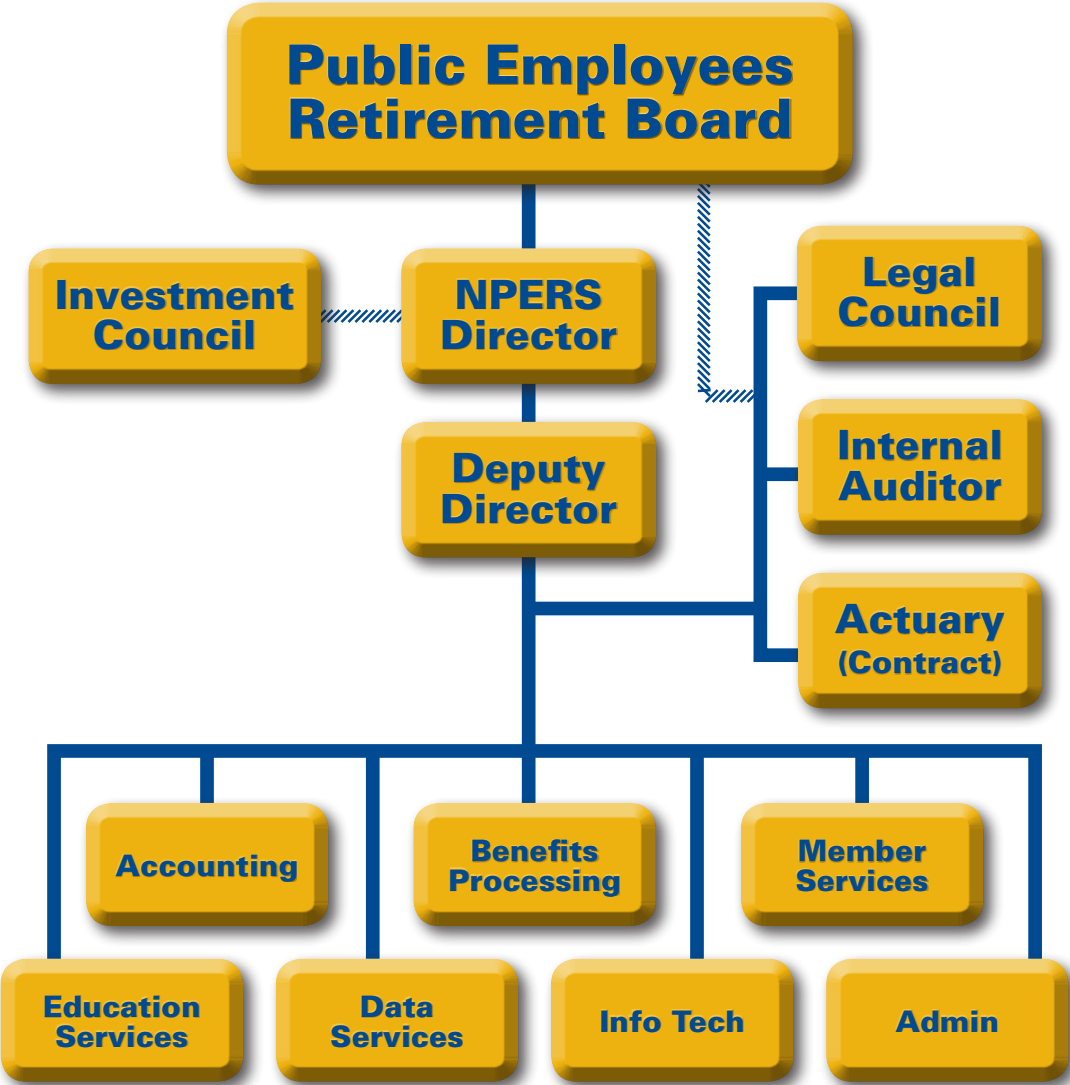
Others:

Spousal Pension Rights Act	42-1101 to 42-1113
Nebraska Investment Council	72-1237 to 72-1269

■ Staffing

We currently have a total of 50 employees on staff. Of these employees, the key management staff are the Director, Deputy Director, Legal Counsel, Internal Auditor, Administrative Assistant and five managers.

■ Organizational Structure



AGENCY ACTIVITY

■ 2009 Accomplishments

1. This year our total number of plan member accounts in the School, Judges, Patrol, State, County and Deferred Compensation plans grew to a record 111,053. The total assets of the plans increased from \$6.7 billion to \$7.2 billion with improved investment performance and market stability.
2. The Call Center answered approximately 34,000 phone calls and met with over 2,100 members who visited our office for retirement information and counseling. The Benefits Department processed 1,209 teacher retirements, 386 estimates for purchase of service, 200 actual purchases of services, 66 Qualified Domestic Relations Orders (QDRO's) and 27 disability retirements.
3. NPERS distributed over \$410 million in benefits to plan members in all six plans. The benefits were in the form of monthly annuity payments, refunds, rollovers, systematic withdrawals, and required minimum distributions.
4. NPERS successfully completed the conversion to the Nebraska Public Retirement Information System (NPRIS) in the March. Throughout the year, the entire agency benefited from capabilities of the new technology. We tested various components, identified warranty issues and proposed enhancements to the system. We also upgraded our desktops to Microsoft 2007 and Outlook 2007.
5. NPERS continued our technology partnership with the Office of the Chief Information Officer (OCIO). NPERS hired a new Information Technology Manager from the OCIO to replace the retiring manager. NPERS contracted with the OCIO to provide further training and transition the maintenance and support of NPRIS. NPERS also extended the vendor contract to continue maintenance and support of NPRIS.
6. In addition to the annual actuarial reports, NPERS worked with our actuary to provide the Legislature with funding projections for the defined benefit and cash balance plans.
7. NPERS revised the agency budget as a result of the 2009 Special Legislative Session. We accepted the proposed base budget cuts of 2.5% in 2009-2010 and 5.0% in 2010-2011.
8. Our Finance and Accounting department exercised careful control of agency expenditures and financial reporting. They worked carefully to convert the accounting functions on NPRIS.
9. NPERS concluded the reconciliation of the State and County member accounts following a satisfactory audit by the State Auditor.
10. The State Auditor performed an audit of the member death records and made recommendations for improving the process. NPERS revised our procedures for auditing and processing death claims to ensure efficient payments to beneficiaries.
11. NPERS reviewed and made changes to the agency's Document Retention Schedule.

AGENCY ACTIVITY

12. The State Auditor audited the State and County plans in the spring and the School, Judges and Patrol plans in the fall. We revised our internal audit procedures and made significant progress on resolving prior audit findings.
13. The PERB approved the Three-Year Internal Audit Plan prepared by the Internal Auditor.
14. Data services processed over 43,000 pieces of incoming mail; 281,000 pieces of outgoing mail; and scanned 275,000 documents. NPERS increased efforts to correct addresses and social security numbers in the system. We have reduced our return mail by 80%.
15. Our Education Services staff traveled Nebraska providing seminars and training for over 2800 individuals. NPERS held 41 "Retirement Planning" Seminars, 4 "Financial Planning Seminars", 9 employer workshops and 23 special presentations for agencies and organizations.
16. The Public Employees Retirement Board (PERB) met monthly throughout the year and participated in an educational retreat in August. Retreat topics included the actuarial assumptions, investment market update, member education services, fiduciary duties, and retirement research studies.
17. The PERB and Nebraska Investment Council (NIC) met jointly in November for the presentations of the defined benefit actuarial reports by the actuary and the capital market assumptions by the investment consultants.
18. The Benefits department and Call Center continued to provide excellent service to members while implementing and testing the new technology system, NPRIS. They provided feedback to the technology department and the vendor to correct problems and recommend improvements to the system, particularly for the Purchase of Service functionality.
19. NPERS established a new process for screening refund applications and processing them more efficiently.
20. NPERS worked with the record keeper to revise procedures for the deferral of State and County plan member accounts, to implement fee changes and create a new statement format. NPERS also worked with the record keeper to correct termination dates and to distribute 884 residual accounts with small balances.
21. NPERS data services department entered 4,820 old member beneficiary records into the system. There are approximately 22,000 old beneficiary records remaining. NPERS continued to convert old documents to electronic images. To date, we have scanned 85% of our documents in storage.
22. NPERS continued to verify service credit for active members hired before 2001 when NPERS began maintaining service credit on our technology system. We have now verified service credit for all member records prior to 1986.

AGENCY ACTIVITY

■ 2010 Action Plan

1. Follow our Mission Statement to provide the highest quality service to our members.
2. Continue improvements to the NPRIS technology system. Develop a strategy for ongoing change control requests and environment support.
3. Finalize the NPERS Disaster Recovery Plan. Establish an alternative processing platform for use in the event of an emergency. Establish secondary offsite storage procedures for duplicate data backups.
4. Monitor agency spending and adhere to the revised budget. Begin work on the next biennium budget.
5. Reduce costs by increasing the number of benefit payments made by direct deposit.
6. Audit 35 school employers, 23 county employers and two public health departments to ensure contributions are accurate and employees are correctly contributing to the plans. Continue resolving prior audit findings.
7. Follow our Three-Year Internal Audit Plan. Submit an Internal Control Plan to DAS Accounting and revise the plan as needed.
8. Distribute NPERS newsletters and mass correspondence to members and employers by email reducing postage and printing costs.
9. Continue the data purification project that includes correcting addresses, hire dates, member account information and entering beneficiaries into the system.
10. Conduct semi-annual death audit queries and review the reports to ensure the accuracy of the member death records and beneficiary payments.
11. Negotiate renewal of our lease space expiring in May 2010.
12. Review and revise the agency Rules and Regulations.
13. Promote retirement education and improve employee and employer attendance at seminars.
14. Participate in legislative hearings and implement retirement legislation enacted by the 2010 Legislature.
15. Negotiate renewal of the actuarial contract expiring in June 30, 2010 to include quarterly projections.

■ Legislation

2009

■ **LB 187** Changes the contribution rate for School plan members from the current 7.28% to 8.28% beginning September 1, 2009. This rate will continue for five years (through August 31, 2014). On September 1, 2014, the rate will return to 7.28%.

Increases the state contribution to the School plan from the current 0.7% of member compensation to 1.0% of member compensation for the same period (September 1, 2009, through August 31, 2014). On September 1, 2014, the state contribution will revert to 0.7% of member compensation. In addition, the bill increases the contribution rate from 7.3% to 8.3% for members of the Class V (Omaha) plan, and increases its state contribution to 1.0% of member compensation for the period September 1, 2009, through August 31, 2014. Effective May 23, 2009, operative on July 1, 2009.

■ **LB 188** Increases the period during which County and State plan members may apply for vesting credit after they are hired from 30 days to 180 days.

Clarifies that County and State plan members who terminate employment and then return to employment more than 120 days later will participate in the Cash Balance benefit, and if they previously participated in the Defined Contribution benefit, their Defined Contribution account will be converted to Cash Balance.

Allows a “holiday” from Required Minimum Distributions for plan year 2009 for County and State plan members participating in the Defined Contribution benefit. Members who have terminated employment and who have reached the age of 70 1/2 will not be required to take the RMD that would otherwise be due for tax year 2009.

Increases the period during which the spousal beneficiary of a deceased County or State plan member may elect to receive benefits as an annuity from 120 days to 180 days.

Provides an exception to the public records requirements for All Plans for information obtained from employers and used in administering the retirement plans. Information considered a public record includes: the member’s name, the retirement system in which the member participates, the date participation commenced, and the date participation ended, if applicable.

Allows State plan members to transfer all or part of their Cash Balance account to their DCP account at retirement. Any remaining balance must either be paid as an annuity or otherwise distributed.

Increases the contribution rate for members of the State Patrol plan beginning July 1, 2009, from 13% to 15% of monthly compensation. On July 1, 2010, both member and employer rates will increase to 16% of compensation. Effective May 14, 2009.

■ **LB 449** Allows School plan members who have retired under disability to work up to 15 hours per week for a School plan employer and still continue to receive retirement benefits. Effective August 30, 2009.

■ **LB 121** Transfers certain state property tax duties back to the county for which the services are provided. State employees will be transferred to county employment and their State retirement accounts will be transferred to the County plan. Affected employees will retain the same benefit participation, account allocation, and vesting as they held immediately before transfer. Employees are to be transferred by July, 2013. Effective August 30, 2009.

AGENCY ACTIVITY

■ **LB 403** Provides that as of October 1, 2009, persons unlawfully present in the state are not eligible to receive certain public benefits. Participation in all plans is limited to employees who are either U.S. citizens or qualified aliens, and are lawfully present in the state. Effective August 30, 2009.

■ **LB 414** Increases salaries for judges; increases member contribution rates for Judges by 1% for the five years beginning July 1, 2009; and increases the court fee for judges' retirement by \$1 (to \$6) for the same time period. Effective May 20, 2009.

2008

■ **LB 1147** Provides investment authority to beneficiaries of deceased State and County Defined Contribution members. Makes technical changes to COLA calculations in the School, Judges, and Patrol Plans. Provides Judges an early retirement benefit based on a 9% actuarial reduction at age 62; 6% at 63; and 3% at 64. Clarifies state service annuity language for members before 1996. Makes other technical changes in the State, County, School, Judges, and Patrol Plans.

2007

■ **LB 324** Continues the State Patrol contribution rates at 13% of monthly compensation by the member and 15% of monthly compensation by the employer and adds a Deferred Retirement Option Plan (DROP).

■ **LB 328** Creates the County Employees Cash Balance Expense Fund and the State Employees Cash Balance Expense Fund and removes the 60 day period during which to re-enroll County and State plan members who return to permanent, full-time employment.

■ **LB 370** Requires NPERS to conduct a survey of all law enforcement retirement systems in the state and file a report with the Retirement Committee of the Legislature.

■ **LB 508** Changes the period in which surviving spouses of members of the Judges Plan and the School Plan may make application for death benefits to twelve months.

■ **LB 596** Provides a one-time cost-of-living adjustment of 85% to the annuities of School and Class V School Plan members.

■ **LB 665** Allows a new election period in which County Plan and State Plan members may join the Cash Balance option.

2006

■ **LB 366** Provides that full-time, permanent State and County employees begin participation immediately upon employment; provides that State Plan members contribute 4.8% of compensation.

■ **LB 1019** Changes annuity end dates, terms of Investment Council members, amortization periods for unfunded accrued actuarial liabilities from 25 to 30 years, definition of compensation in School Plan, and fiduciary duty of PERB members; allows PERB to credit State and County Cash Balance dividends.

2005

■ **LB 503** 7% School Compensation Cap; employer testing; PERB per diems, added State/County investment options; increased contribution rates for School and Patrol Plans; internal auditor and legal counsel provisions.

■ **LB 144** Change provisions for School statements.

AGENCY ACTIVITY

■ **LB 364** Technical changes, fees for late reporting by employers, PERB active or retired members.

■ **LB 348** Additional courts and filings now include retirement fees; Judges salary increase.

2004

■ **LB 1097** Increased Judges' benefits and contribution rates. Expanded State and County Defined Contribution employer investment options.

■ **LB 960** Added one new PERB member (Patrol) and changed a public position to a school administrator position on the PERB.

■ **LB 961** Eliminated "certified mailing" requirement for School Annual Statements.

■ **LB 514** Raised Patrol contribution rates for one year.

2003

■ **LB 451** Agency technical "clean-up."

■ **LB 320** Judges contribution rate increase.

■ **LB 760** Increased court fees for Judges Plan.

2002

■ **LB 407** Various plan terms updated and changed actuarial funding methods.

■ **LB 687** Cash Balance benefit for State/County.

2001

■ **LB 408** Purchase of Service changes.

■ **LB 711** COLA changes and 2% formula for School Plan.

PLAN STATUS

■ Funded Status of Pensions

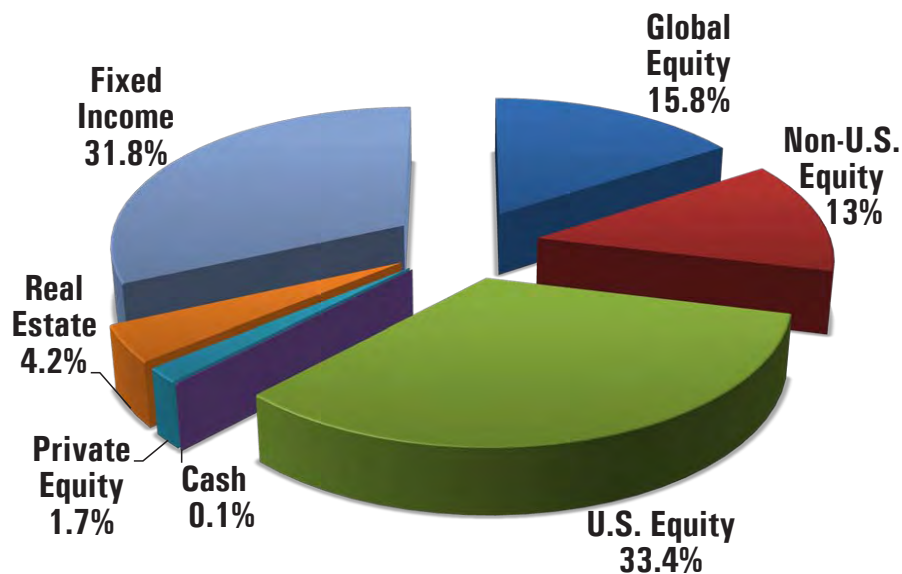
Annually, our actuary performs an actuarial valuation of the Defined Benefit and Cash Balance plans. The Cash Balance plans are on a calendar year basis with the actuarial report issued in the spring of the year. The Defined Benefit plans are on a fiscal year basis with the actuarial report issued in the fall. In our Defined Benefit plans, we smooth our market returns over a 5-year period. The severe financial crisis of 2008 had little effect on the Defined Benefit plans in 2008, but had an increased impact on the funded status in 2009 and will continue to do so over the next few years.

Investment Return for Defined Benefit Plan

FYE 2009	FYE 2008	FYE 2007	FYE 2006	FYE 2005	FYE 2004
-19.1%	-5.8%	17.7%	10.1%	9.8%	14%

This compares to our actuarial assumed rate of 8% based on historical averages.

Asset Allocation



The asset allocation for the Defined Benefit plans as of June 30, 2009, was 33.4% U.S. Equity; 13% Non-U.S. Equity; 15.8% Global Equity; 31.8% Fixed Income; 4.2% Real Estate; 0.1% Cash and 1.7% Private Equity.

Judges Plan

In March 2009, LB414 increased court fees for the Judges Plan by \$1 and increased contribution rates for judges by 1% for a period of five years beginning July 1, 2009. The results of the actuarial valuation show no additional contributions are needed for the current year.

As of June 30, 2009, the Judges Plan was 102% funded (GASB 25). This means that if it were necessary we could pay every plan member, regardless of age, the benefit owed to them for the remainder of their lives. There is no current unfunded liability. We are over-funded by \$2.4 million.

School Employees Plan

The annual contributions to the School Plan by members, school districts and the State are sufficient to cover the annual "normal" cost (cost of the benefits earned during the year). There is no additional payment needed July 1, 2010, toward the current liability.

The School Plan has an unfunded liability this year of nearly \$1.1 billion due to investment losses as compared to the plan's assumed rate of return of 8% per year. This means the actuarial accrued liabilities of \$8.09 billion are greater than the actuarial value of the assets of \$7 billion.

As of June 30, 2009, the School Plan was 86.6% funded (GASB 25).

State Patrol Plan

The State Patrol Plan needs an additional contribution of \$1,801,610 for the plan year beginning July 1, 2010. LB 188 in 2009 increased employee contributions from 13% to 15%. In 2010, both the member and employee contributions will be 16%.

It is important to note that the "normal cost" (annual cost of a member's accruing benefit) in the Patrol Plan is 27.75% of salary at the present time. The State Patrol Plan has an unfunded liability of \$31.2 million and is 89.8% funded as of June 30, 2009.

PLAN STATUS

Summary

All three of these Defined Benefit pension plans were in strong financial condition at the end of fiscal year 2009. Currently, there are sufficient assets to pay benefits for years to come. This can be demonstrated by comparing the annual distributions to the asset value. The annual benefit distributions from the plans as a percent of the actuarial value of assets on June 30, 2009, were 4.29% for the School Plan; 4.90% for State Patrol and 4.66% for the Judges. The Defined Benefit plan distributions for the 2009 fiscal year were \$300,771,337 for the School Plan; \$13,450,493 for the Patrol Plan; and \$5,641,650 for the Judges.

Note: Copies of our Annual Actuarial Valuation Reports have been provided separately.

Cash Balance Benefits (State/County)

The Cash Balance benefit has been offered to State and County employees who elected to participate and for all new employees enrolled since January 1, 2003. The actuarial valuation for these benefits is performed annually. The annual credited rate for 2007 was 6.12%. A dividend of 5.18% was paid in September 2008, to members with a balance on December 31, 2007, for State and 5.34% for County. The interest credit and dividend combined produced a total return of 10.2% and 10.4% respectively in 2007. The annual credited rate for 2008 was 5.02%. The annual credited rate for 2009 was 5%. There was no dividend generated by the PERB in 2009 for the 2008 plan year. For the historical crediting rates and dividends, [see Appendix A](#).

State and County Plan members were given another opportunity to transfer from the Defined Contribution to the Cash Balance plan as provided by LB 665 in 2007. There were 1,574 members who elected to transfer to the Cash Balance plan effective January 1, 2008.

Defined Contribution Benefits (State/County)

We are in the process of finalizing our Annual Investment Report for those State and County members who participate in the Defined Contribution portion of these plans, as well as for members of the voluntary Deferred Compensation Plan (DCP).

■ Retirement Funding

Program 515

State law requires ongoing appropriations to the three Defined Benefit plans under our administration as well as funding for the State Service Annuity for the separate Omaha Public Schools Retirement Plan, which passes through our agency before being paid to Omaha.

Specifically, the ongoing appropriations include:

1. A contribution totaling \$6.9 million split between the three Defined Benefit plans and Omaha to supplement COLA benefits granted to retirees.
2. A contribution of 7/10 of 1% of total salaries is contributed to the School Employees Plan and the Omaha Public School Plan. The Legislature increased this appropriation to 1% of the total salaries contributed beginning July 1, 2009.
3. The State is obligated to fund the State Service Annuity portion of the School Employees Retirement Plan and the Omaha Public Schools Retirement Plan, the amounts of which are determined each year by the annual actuarial valuation.

If additional contributions are required to fund any unfunded liabilities for the School Employees, Judges or State Patrol Plans, the State is required by law to make that contribution. Here are the current funding totals appropriated or as requested in our budget, including the funding for Omaha:

2007-08	2008-09	2009-10	2010-2011
\$19,134,688	\$19,468,215	\$25,589,490	\$27,420,010*

*Budget request.

PLAN STATUS

■ Retirement Plan Assets

Market Value

SYSTEM	2007	2008	2009
School Employees*	\$7,024,856,413	\$6,578,300,402	\$5,265,649,708
Judges*	\$121,215,683	\$113,254,039	\$90,306,300
State Patrol*	\$279,618,100	\$259,479,803	\$204,927,593
State Employees – DC	\$824,569,183	\$528,524,670	\$633,927,249
State Employees – CB	\$470,871,851	\$467,425,098	\$592,363,564
County Employees – DC	\$191,617,726	\$131,193,097	\$158,891,241
County Employees – CB	\$140,000,355	\$129,233,772	\$165,559,553
Deferred Compensation NPERS Plan	\$109,566,840	\$83,337,861	\$105,355,446
Hartford Plan	\$51,631,906	\$31,305,975	\$38,240,141
Total All Plans	\$9,213,948,057	\$8,322,054,717	\$7,255,220,795

*Defined Benefit Plans thru 6/30/09
State, County, DCP thru 12/31/09

Plan Membership Summary

2009 Membership Status

SYSTEM	ACTIVE	INACTIVE	RETIRED	TOTALS
School Employees*	39,231	19,413	15,949	74,593
Judges *	154	8	157	319
State Patrol *	468	11	372	851
State Employees – DC	5,588	1,573	-----	7,161
State Employees – CB	11,749	2,151	493	14,393
County Employees – DC	2,144	743	-----	2,887
County Employees – CB	5,632	801	218	6,651
Deferred Compensation – NPERS	3,087	126	-----	3,213
Deferred Compensation –Hartford	-----	985	n/a	985
TOTALS	68,053	25,811	17,189	111,053

*Thru 6/30/09

2009 Activity Summary

SYSTEM	ENROLLMENTS	REFUNDS	RETIREMENTS
School Employees	3,412	1,541	1,209
Judges	5	0	5
State Patrol	0	1	12
State Employees – DC	0	264	280
State Employees – CB	1,916	1,357	383
County Employees – DC	0	82	142
County Employees – CB	845	467	250
Deferred Compensation*	152	57	117
TOTALS	6,330	3,769	2,398

*Excludes Hartford Plan members

PLAN STATUS

■ Operating Budget Summary

Program 041 and 042

2007-08	2008-09	2009-10	2010-2011
\$11,828,838*	\$8,965,310	\$8,528,314**	\$5,062,805

*Includes amounts appropriated in "A" bills and deficit requests.

**Includes 2009 Special Session budget cuts.

Operating expenses paid by each plan during 2008-09 fiscal year:

School	\$6,086,650	63%
Patrol	467,883	5%
Judges	358,253	4%
State	1,751,231	18%
County	851,891	9%
DCP	125,870	1%

Our budget for FY09-10 represents expenses of approximately .12% (12BP) of our combined assets of \$7.2 billion. For FY10-11, it is 0.07% (7BP) of our combined assets.

The Master Lease Purchase Program

This program has been used to finance a majority of our technology expenses and at a low interest rate, which allows us to keep a larger portion of our pension assets fully invested. The higher rate of return expected to be earned on the assets in the long run is a savings, despite the cost of financing.

In most cases we issued a certificate when funding was needed throughout the project, beginning in 2000. In 2002 we refinanced the first lease certificate issued in December 2000 for \$1.3 million, with an additional \$4 million for a combined \$5.3 million at an interest rate of 3.129%. This portion was paid off in October 2008. The second lease issued in November 2001 for \$1.9 million was paid off in November 2009, and the third lease in 2003 was issued for \$5.4 million and will be paid off in April 2010. In February of 2004 we issued our final master lease certificate in the amount of \$3.7 million at an interest rate of 2.53%. This financing approach also spreads our expenses for the project over more of the members who will ultimately benefit from the improved information system that has been developed. NPERS' entire master lease purchase program will be paid off in January 2011.

Education Services

Seminars, Workshops, and Training

Retirement Planning Seminars		
<p>Retirement Planning Seminars are conducted for members of all five plans. By law, members must be at least age 50 or within five years of qualifying for retirement or early retirement to attend. The seminars include basic planning aspects related to pension benefits, finances, insurance, estate planning, social security benefits and emotional preparation. Members may attend twice with a spouse or other guest, with paid leave, prior to retirement.</p>		
Number of Seminars (12 Locations)	Total Attendees in 2009	Average Attendance Per Seminar
41	1,650	40

Financial Planning Seminars		
<p>Members of the State and County Plans under age 50 have the option to attend our Financial Planning Seminars which include a discussion on our pension benefits and investment options, financial planning and estate planning. This program provides members a better understanding of their retirement plan and the need for personal financial planning long before retirement occurs. With over a third of our State and County members in the Defined Contribution portion of these plans, investment education is vital. Prior to age 50, members may attend twice, with a spouse or other guest, with paid leave.</p>		
Number of Seminars (4 Locations)	Total Attendees in 2009	Average Attendance Per Seminar
4	128	32

Special Meetings/Training Sessions	
<p>Upon the request of members or employers, NPERS staff will speak to groups about the various plan provisions or about changes that occur through legislations.</p>	
2009 Venues	
<ul style="list-style-type: none"> ■ School employee in-service meetings ■ "Retirement 101" sessions for State, County and County Health Department employees ■ Information booths at employee benefit fairs ■ Nebraska School Nutrition Association Annual Conference 	<ul style="list-style-type: none"> ■ Department of Administrative Services Spring Training ■ World Day on the Mall ■ Nebraska Association of County Officials Annual Conference ■ Probation Administration's Executive Management Meeting
Number of Sessions	Total Attendees in 2009
23	805

AGENCY SERVICES

Employer Education Programs

NPERS recognizes the key role the State Agency, County and School Employers provide for enrollment and information to members. NPERS provides informational materials to these employers for distribution to members. To ensure all employees are enrolled when eligible, NPERS also provides the employers with plan procedure manuals, notices and regular employer training statewide. We have designated one individual on staff to oversee and coordinate the preparation of materials, manuals, and training for the employers.

2009 Venues

- School Employer Contact training workshops
- County Clerk training workshops
- NACO Annual Convention
- Interactive Information Forum for State agency human resource representatives

Number of Meetings	Total Attendees in 2009
9	272

Publications and Online Resources

Plan Member Handbooks

Each member is provided a plan handbook at the time he/she joins the plan. Handbooks contain a summary of plan benefits and are updated periodically.

Handbooks Updated in 2009

- School Plan Handbook Updated 09/2009
- State Patrol Handbook Updated 07/2009
- Deferred Compensation Plan (DCP) Handbook Updated 07/2009
- County Plan Handbook Updated 08/2009

Newsletters

NPERS uses newsletters to inform active members of proposed legislation and changes in benefits. A separate newsletter is sent annually to retired plan members receiving benefits. Newsletters are also used to discuss basic retirement educational topics and to encourage members to take advantage of the Financial Planning and Retirement Planning Seminars in their areas.

Annual Investment Report

State and the County Defined Contribution members and employees enrolled in our voluntary Deferred Compensation Plan have 13 investment options available to them. Each year we prepare an Annual Investment Report which includes annual investment returns and details on each investment fund. The report also includes year-end information on the Cash Balance benefit. This report is available on our website and announced in the State and County *Retirement News* newsletter. We mail a paper copy of the report to those who request it.

Agency Website

The agency website, npers.ne.gov, was created in 1998 and is continually updated. Members and employers may access the site for basic plan information, forms, seminar schedules and registration brochures, training, videos, benefit calculators, legislative updates, newsletters, annual report, other publications and employer manuals. A recent improvement includes interactive capabilities for completing forms.

■ Additional Services

Person-to-Person Contact

Members can contact NPERS in person, by telephone or by writing NPERS. Requests by phone to obtain detailed information on beneficiary listings or estimated benefit amounts require proper identification before the information will be released. We ask that all members schedule office visit appointments in advance if extensive plan information is being requested.

Recordkeeper Services

State and County members participating in the Defined Contribution benefit as well as DCP members have access to daily account values from NPERS' recordkeeper, Ameritas Life Insurance Company. Plan members may make investment changes via the Ameritas website at: <https://secure.unifocompanies.com/service/login.asp>.

Statements of Account

Each plan member receives a statement of his/her account. Members of our School, Judges and State Patrol Plans receive annual statements showing account balances, reported service and salary, and other pertinent information. Our State and County members, and Deferred Compensation Plan members, receive quarterly statements.

Our recordkeeper recently expanded and improved the statement format for the State, County and Deferred Compensation Plan members.

2009 Services Summary

	2007	2008	2009
Incoming Phone Calls Answered	41,202	32,898	34,194
Office Visitors	700	1,378	2,102
Incoming Mail	49,551	43,065	34,548
Outgoing Mail	385,119	499,923	281,924
Data Purification Project	556	7,687	3,607
Document Imaging Project Scanned Documents	429,215	497,445	276,212
Converted Documents Completed	11,372	509	461

AUDITING

■ Internal Control

Purpose

To ensure the proper implementation and ongoing compliance with federal and state legislation governing the pension plans under the administration of the PERB.

Compliance Process

NPERS has established compliance to federal and state laws as a separate function. This function centralizes implementation and ongoing review of federal and state statutes governing plans under the PERB. The purpose of this function is to coordinate all duties and responsibilities across all lines of authority in NPERS, utilizing all resources to ensure NPERS is in compliance. The responsibility of this function is assigned to key NPERS staff members.

Responsibilities

The Director and agency Legal Counsel monitor and track the legislative process. They provide testimony at Retirement Committee hearings as directed by the PERB and assist in the preparation of legislation and amendments. Regular updates are provided to the PERB and NPERS managers regarding proposed legislative and regulatory changes.

The Accounting and Finance Manager prepares the fiscal notes for legislation affecting the retirement system.

Once legislation has been enacted, the Director, Legal Counsel, Internal Auditor, and Managers meet to formalize a plan for implementation. The implementation of new legislation becomes the responsibility of the Managers, with guidance and direction provided by the Director, Legal Counsel, and Internal Auditor.

The Internal Auditor will perform periodic test of controls to ensure compliance with laws and regulations.

Implementation Procedures

A. Have plan of action in place for new legislation passed by the State Legislature or Congress within 30 to 45 days after notification is received on the change, but at least 30 days prior to the effective date.

B. Ensure proper training of staff prior to the effective date of the law changes.

C. Communicate proposed and actual plan law changes to the PERB, staff, employers and all affected members with updates on the final law changes prior to the effective date of the change.

D. Begin implementation on the effective date of the law change. If rules and regulations governing the administration of the law are not complete or are in the approval process, use the proposed rules and regulations as policy so as not to delay implementation.

E. Compliance monitoring should begin immediately with all processes checked for accuracy by designated staff. Formal review of the guidelines with staff is to begin within three to six months after the effective date.

F. NPERS Internal Audit function will periodically review the design and effectiveness of the control structure to ensure compliance with laws and regulations.

G. Continuously review long-standing statutes to make remedial changes or updates if necessary.

H. Review audit issues to determine policy or procedure changes, as needed.

■ Economic Value and Annual Plan Audits

Economic Value of Defined Benefit Systems to Members and to the State

Members receive pension benefits at retirement that will provide both economic security for themselves and their families while proving to be a major boost to the state economy. Members also have added protection for survivors as well as protection in the event the member becomes disabled.

Last year, nearly 17,000 retirees received monthly payments from the three Defined Benefit plans totalling more than \$310 million in pension income. About 90% of that money stays in Nebraska, and is spent by the retirees residing in every county. The economic value of the pension income is multiplied several times as the money is circulated throughout the state. [See Appendix A](#) for a chart of the monthly Defined Benefit pension payouts by county and by state.

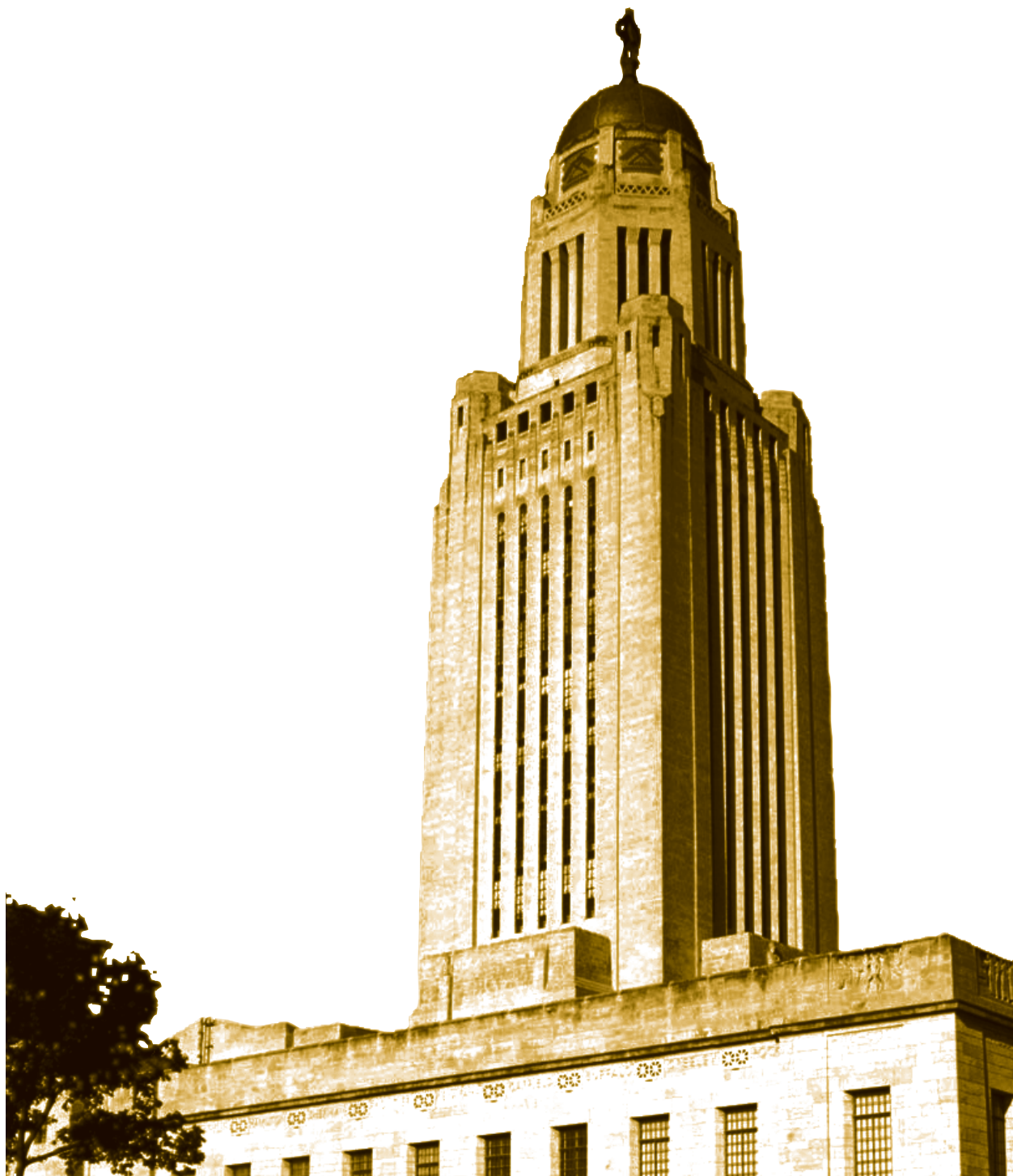
Annual Plan Audits

Each year the State Auditor's office conducts an audit of each of the five retirement plans under our administration. The State and County Plans are audited in the spring and summer. The School, Judges and State Patrol Plans are audited in the fall and winter. The Deferred Compensation Plan is audited every three years. There has not been a recent audit conducted that reported a material problem with the financial statements of our pension plans.

In 2002 we received the results of a formal compliance audit conducted by two outside firms with expertise in retirement plans. The firms were hired, per statute, to conduct a review of our compliance with both federal and state laws governing public pension plans. The results of this compliance audit were very positive and demonstrated to the PERB and agency management that we were following the statutes governing our plans.

Recent audits for our various retirement plans can be found on the State Auditor's website: <http://www.auditors.state.ne.us/>.

■ Appendices



Nebraska Public Employees Retirement Systems

Appendix A

DEFINED CONTRIBUTION AND DEFERRED COMPENSATION PLANS

Time-Weighted Rates of Return

Updated December 31, 2009

	Money Market Fund	Stable Value Fund	Bond Market Index Fund	S & P Stock Index Fund	Large Company Growth Stock Index Fund	Large Company Value Stock Index Fund
Quarter	0.06%	0.91%	0.21%	6.04%	8.03%	4.24%
2009	0.49	3.81	5.95	26.85	37.48	20.08
2008	2.44	4.50	5.36	-36.89	-38.21	-36.81
2007	5.16	4.73	7.06	5.59	11.78	-0.01
2006	5.18	4.52	4.36	15.90	9.14	22.22
2005	2.99	4.25	2.44	4.96	5.15	7.16
2004	1.18	4.40	4.34	10.90	6.35	16.50
1-Year	0.49%	3.81%	5.95%	26.85%	37.48%	20.08%
3-Year	2.68	4.35	6.12	-5.45	-1.71	-8.80
5-Year	3.24	4.36	5.02	0.56	1.73	-0.13
10-Year	3.11	5.17	6.39	-0.87	-3.91	2.54

	Small Company Stock Fund	International Stock Index Fund	AGE-BASED FUND			Investor Select Fund
			Conservative Premixed Funds	Moderate Premixed Funds	Aggressive Premixed Fund	
Quarter	3.35%	3.73%	1.52%	2.84%	4.10%	4.46%
2009	36.34	39.82	11.85	19.65	25.99	25.92
2008	-36.01	-43.87	-6.78	-17.84	-28.74	-25.79
2007	-3.06	16.15	6.60	6.89	6.53	5.65
2006	16.60	26.79	8.52	11.46	15.18	14.97
2005	6.07	16.46	4.05	4.97	6.04	N/A
2004	17.86	20.83	5.17	8.25	10.54	N/A
1-Year	36.34%	39.82%	11.85%	19.65%	25.99%	25.92%
3-Year	-5.43	-3.04	3.59	1.66	-1.47	-0.43
5-Year	0.90	N/A	4.65	4.22	3.16	N/A
10-Year	5.72	N/A	4.30	3.60	2.21	N/A

MAJOR INDICES:	S & P 500 (Large Co. Stock)	Russell 2000 (Small Co. Stock)	MSCI ACWI-EX US (Int'l. Stock)	Barclays Aggregate (Bonds)	90-Day Treasury Bill	CPI (Inflation)
Quarter	6.04%	3.87%	3.74%	0.20%	0.04%	-0.01%
2009	26.46	27.17	41.45	5.93	0.23	2.72
1-Year	26.46%	27.17%	41.45	5.93%	0.23%	2.72
3-Year	-5.63	-6.07	-3.49	6.04	2.51	2.28
5-Year	0.42	0.51	5.83	4.97	3.09	2.56
10-Year	-0.95	3.51	2.72	6.33	3.02	2.52

- Returns are net of investment management fees.
- The 1, 3, 5, and 10 - year rates of return are annualized rates of return of the funds through December 31, 2009.
- Past performance is not indicative of future performance.

- Members who selected the Age-Based Fund option should check performance in the following manner: Members through age 39 use the Aggressive Premixed Fund; Members at age 40 through 59 use the Moderate Premixed Fund; and Members at age 60 and over should use the Conservative Premixed Fund.

Rates of return are for the investment vehicle currently used. Following are the dates of NE fund inception: Stable Value Fund - 1996; Bond Market Index Fund, S & P 500 Stock Index Fund, Money Market Fund - 1997; Large Company Growth Stock Index Fund, Large Company Value Stock Index Fund, Conservative Premixed Fund, Moderate Premixed Fund, Aggressive Premixed Fund - 1999; Small Company Stock Fund - 2000; International Stock Index Fund and Investor Select Fund - 2005.

Cash Balance Credit Rate

YEAR	Q1	Q2	Q3	Q4	Annual Rate
2003	5.00%	5.00%	5.00%	5.15%	5.04%
2004	5.02%	5.00%	5.61%	5.12%	5.19%
2005	5.26%	5.59%	5.36%	5.58%	5.45%
2006	5.98%	6.22%	6.55%	6.32%	6.27%
2007	6.08%	6.11%	6.45%	5.85%	6.12%
2008	5.08%	5.00%	5.00%	5.00%	5.02%
2009	5.00%	5.00%	5.00%	5.00%	5.00%

Cash Balance option pays a credit rate which is the greater of 5% or the applicable federal mid-term rate, as published by the IRS as of the first day of the calendar quarter, plus 1.5%, compounded annually.

Cash Balance Dividend

YEAR/ PLAN	Rate	Balance As Of:	Employed On:	Paid On:	Amount Paid
2003	n/a	n/a	n/a	n/a	n/a
2004	3.088%	12/31/03	9/30/04	9/30/04	\$6,801,286.65
2005	2.800%	12/31/04	4/18/05	6/30/05	\$6,845,702.09
2006 State	13.500%	12/31/05	12/31/05	10/27/06	\$41,505,456.02
2006 County	16.400%	12/31/05	12/31/05	10/27/06	\$14,801,902.56
2007	2.730%	12/31/06	12/31/06	9/27/07	\$13,531,875.14
2008 State	5.180%	12/31/07	12/31/07	10/3/08	\$21,630,438.25
2008 County	5.340%	12/31/07	12/31/07	10/3/08	\$6,943,643.11
2009	n/a	n/a	n/a	n/a	\$0.00

Public Employees Retirement Board has granted dividends in 2004, 2005, 2006, 2007 and 2008 to members with the Cash Balance option. The dividends were calculated based upon the account balances on the last day of the prior year. There was no dividend granted in 2009 for either State or County Plans.

Appendix B

Monthly Defined Benefit Pension Benefits Paid

Distribution By Nebraska County – December 2009

COUNTY	School/Patrol/Judge (GROSS AMOUNTS)			Omaha Schools (GROSS AMOUNTS)			Statewide Totals		
	Benefit Payment	Members	Average Payment	Benefit Payment	Members	Average Payment	Benefit Payment	Members	Average Payment
ADAMS	545,570.85	340	\$1,605	3,154.76	1	\$3,155	548,725.61	341	\$1,609
ANTELOPE	133,819.47	100	\$1,338				133,819.47	100	\$1,338
ARTHUR	10,987.83	9	\$1,221				10,987.83	9	\$1,221
BANNER	3,490.33	4	\$873				3,490.33	4	\$873
BLAINE	14,881.64	11	\$1,353				14,881.64	11	\$1,353
BOONE	91,407.54	92	\$994				91,407.54	92	\$994
BOX BUTTE	200,197.52	115	\$1,741				200,197.52	115	\$1,741
BOYD	40,176.07	34	\$1,182				40,176.07	34	\$1,182
BROWN	63,928.36	44	\$1,453				63,928.36	44	\$1,453
BUFFALO	812,348.93	496	\$1,638	1,608.13	1	\$1,608	813,957.06	497	\$1,638
BURT	199,701.19	123	\$1,624	6,353.35	3	\$2,118	206,054.54	126	\$1,635
BUTLER	109,276.51	70	\$1,561				109,276.51	70	\$1,561
CASS	432,488.93	274	\$1,578	62,449.95	36	\$1,735	494,938.88	310	\$1,597
CEDAR	123,407.49	96	\$1,285				123,407.49	96	\$1,285
CHASE	78,065.21	59	\$1,323				78,065.21	59	\$1,323
CHERRY	62,954.00	58	\$1,085				62,954.00	58	\$1,085
CHEYENNE	166,030.81	108	\$1,537				166,030.81	108	\$1,537
CLAY	121,157.66	88	\$1,377	937.30	1	\$937	122,094.96	89	\$1,372
COLFAX	108,896.12	85	\$1,281	5,276.59	3	\$1,759	114,172.71	88	\$1,297
CUMING	93,535.88	82	\$1,141				93,535.88	82	\$1,141
CUSTER	205,059.28	140	\$1,465				205,059.28	140	\$1,465
DAKOTA	147,996.82	123	\$1,203				147,996.82	123	\$1,203
DAWES	119,148.42	93	\$1,281				119,148.42	93	\$1,281
DAWSON	345,772.34	239	\$1,447	3,707.90	2	\$1,854	349,480.24	241	\$1,450
DEUEL	45,010.40	29	\$1,552				45,010.40	29	\$1,552
DIXON	82,441.72	67	\$1,230	1,476.16	1	\$1,476	83,917.88	68	\$1,234
DODGE	814,469.33	503	\$1,619	6,318.93	5	\$1,264	820,788.26	508	\$1,616
DOUGLAS	3,497,477.32	1864	\$1,876	4,867,019.89	2501	\$1,946	8,364,497.21	4,365	\$1,916
DUNDY	26,748.50	17	\$1,573	4,534.17	1	\$4,534	31,282.67	18	\$1,738
FILLMORE	97,579.21	68	\$1,435				97,579.21	68	\$1,435
COUNTY	24,574,322.43	15,112		5,618,734.35	2,938		30,193,056.78	18,050	

COUNTY	School/Patrol/Judge (GROSS AMOUNTS)			Omaha Schools (GROSS AMOUNTS)			Statewide Totals		
	Benefit Payment	Members	Average Payment	Benefit Payment	Members	Average Payment	Benefit Payment	Members	Average Payment
FRANKLIN	54,761.75	39	\$1,404				54,761.75	39	\$1,404
FRONTIER	51,388.66	41	\$1,253				51,388.66	41	\$1,253
FURNAS	111,979.81	80	\$1,400				111,979.81	80	\$1,400
GAGE	413,201.19	272	\$1,519	6,880.52	2	\$3,440	420,081.71	274	\$1,533
GARDEN	60,825.17	39	\$1,560				60,825.17	39	\$1,560
GARFIELD	57,185.48	39	\$1,466	3,927.60	2	\$1,964	61,113.08	41	\$1,491
GOSPER	91,566.98	51	\$1,795				91,566.98	51	\$1,795
GRANT	15,109.22	7	\$2,158				15,109.22	7	\$2,158
GREELEY	47,002.06	32	\$1,469				47,002.06	32	\$1,469
HALL	1,033,416.77	571	\$1,810	3,054.02	3	\$1,018	1,036,470.79	574	\$1,806
HAMILTON	188,419.67	112	\$1,682				188,419.67	112	\$1,682
HARLAN	91,008.61	48	\$1,896				91,008.61	48	\$1,896
HAYES	19,452.87	17	\$1,144				19,452.87	17	\$1,144
HITCHCOCK	59,703.54	41	\$1,456				59,703.54	41	\$1,456
HOLT	162,530.38	134	\$1,213				162,530.38	134	\$1,213
HOOKER	31,529.31	24	\$1,314				31,529.31	24	\$1,314
HOWARD	111,682.91	81	\$1,379				111,682.91	81	\$1,379
JEFFERSON	138,768.07	107	\$1,297				138,768.07	107	\$1,297
JOHNSON	73,158.29	60	\$1,219				73,158.29	60	\$1,219
KEARNEY	97,335.49	74	\$1,315				97,335.49	74	\$1,315
KEITH	159,594.18	105	\$1,520				159,594.18	105	\$1,520
KEYAPAHA	11,025.89	7	\$1,575				11,025.89	7	\$1,575
KIMBALL	110,804.25	66	\$1,679				110,804.25	66	\$1,679
KNOX	175,538.72	142	\$1,236	1,390.86	1	\$1,391	176,929.58	143	\$1,237
LANCASTER	4,528,974.95	2497	\$1,814	36,362.80	27	\$1,347	4,565,337.75	2,524	\$1,809
LINCOLN	621,575.66	366	\$1,698	1,703.55	2	\$852	623,279.21	368	\$1,694
LOGAN	21,538.88	18	\$1,197				21,538.88	18	\$1,197
LOUP	12,599.38	10	\$1,260				12,599.38	10	\$1,260
MADISON	547,687.97	349	\$1,569	1,483.98	1	\$1,484	549,171.95	350	\$1,569
MCPHERSON	2,926.98	5	\$585				2,926.98	5	\$585
MERRICK	136,145.85	99	\$1,375	1,763.40	2	\$882	137,909.25	101	\$1,365
MORRILL	114,158.36	72	\$1,586				114,158.36	72	\$1,586
NANCE	86,766.34	57	\$1,522	362.58	1	\$363	87,128.92	58	\$1,502
COUNTY	24,574,322.43	15,112		5,618,734.35	2,938		30,193,056.78	18,050	

Appendix B

PENSION BENEFITS SUMMARY

COUNTY	School/Patrol/Judge (GROSS AMOUNTS)			Omaha Schools (GROSS AMOUNTS)			Statewide Totals		
	Benefit Payment	Members	Average Payment	Benefit Payment	Members	Average Payment	Benefit Payment	Members	Average Payment
NEMAHA	145,315.82	105	\$1,384	991.84	1	\$992	146,307.66	106	\$1,380
NUCKOLLS	63,659.83	61	\$1,044				63,659.83	61	\$1,044
OTOE	297,083.92	194	\$1,531	10,060.73	6	\$1,677	307,144.65	200	\$1,536
PAWNEE	61,780.21	43	\$1,437	6,041.34	3	\$2,014	67,821.55	46	\$1,474
PERKINS	45,710.40	43	\$1,063				45,710.40	43	\$1,063
PHELPS	230,814.40	150	\$1,539	928.34	1	\$928	231,742.74	151	\$1,535
PIERCE	115,397.50	86	\$1,342				115,397.50	86	\$1,342
PLATTE	472,103.20	287	\$1,645	687.65	1	\$688	472,790.85	288	\$1,642
POLK	127,459.99	87	\$1,465				127,459.99	87	\$1,465
RED WILLOW	230,574.68	165	\$1,397	2,674.65	1	\$2,675	233,249.33	166	\$1,405
RICHARDSON	144,339.21	116	\$1,244	705.96	1	\$706	145,045.17	117	\$1,240
ROCK	18,905.67	17	\$1,112				18,905.67	17	\$1,112
SALINE	227,317.49	156	\$1,457				227,317.49	156	\$1,457
SARPY	1,484,666.93	782	\$1,899	494,268.92	281	\$1,759	1,978,935.85	1,063	\$1,862
SAUNDERS	293,364.59	192	\$1,528	16,952.36	9	\$1,884	310,316.95	201	\$1,544
SCOTTSBLUFF	757,168.34	441	\$1,717				757,168.34	441	\$1,717
SEWARD	318,992.12	188	\$1,697	521.56	1	\$522	319,513.68	189	\$1,691
SHERIDAN	100,532.44	66	\$1,523				100,532.44	66	\$1,523
SHERMAN	80,185.44	54	\$1,485				80,185.44	54	\$1,485
SIoux	7,459.18	7	\$1,066				7,459.18	7	\$1,066
STANTON	56,768.21	41	\$1,385				56,768.21	41	\$1,385
THAYER	121,910.79	88	\$1,385				121,910.79	88	\$1,385
THOMAS	14,583.06	12	\$1,215				14,583.06	12	\$1,215
THURSTON	58,301.04	51	\$1,143				58,301.04	51	\$1,143
VALLEY	84,462.07	55	\$1,536	756.41	1	\$756	85,218.48	56	\$1,522
WASHINGTON	257,879.89	167	\$1,544	62,234.14	33	\$1,886	320,114.03	200	\$1,601
WAYNE	185,082.41	124	\$1,493	241.97	1	\$242	185,324.38	125	\$1,483
WEBSTER	67,963.74	54	\$1,259	1,412.17	1	\$1,412	69,375.91	55	\$1,261
WHEELER	3,857.48	4	\$964				3,857.48	4	\$964
YORK	267,293.06	183	\$1,461	489.87	1	\$490	267,782.93	184	\$1,455
COUNTY	24,574,322.43	15,112		5,618,734.35	2,938		30,193,056.78	18,050	

TOTAL GROSS BENEFIT PAID PER MONTH TO NEBRASKA COUNTY RESIDENTS FOR ALL FOUR SYSTEMS = **\$30,193,056**

Monthly Defined Benefit Pension Benefits Paid

Distribution By State – December 2008

	School/Patrol/Judge (GROSS AMOUNTS)		Omaha Schools (GROSS AMOUNTS)		Statewide Totals	
	Gross Pension	% of Total	Gross Pension	% of Total	Total Pension	% of Total
AK	5,791.45	0.02%			5,791.45	0.02%
AL	5,092.51	0.02%	7,782.93	0.12%	12,875.44	0.04%
AR	85,472.23	0.31%	29,462.27	0.45%	114,934.50	0.34%
AZ	329,701.96	1.21%	82,391.83	1.26%	412,093.79	1.22%
CA	69,589.79	0.26%	43,206.98	0.66%	112,796.77	0.33%
CO	246,960.38	0.91%	55,914.87	0.85%	302,875.25	0.90%
CT	1,053.96	0.00%			1,053.96	0.00%
DC			1,556.23	0.02%	1,556.23	0.00%
DE	8,890.72	0.03%	8,209.14	0.13%	17,099.86	0.05%
FL	136,113.54	0.50%	47,723.10	0.73%	183,836.64	0.54%
GA	12,290.09	0.05%	7,910.59	0.12%	20,200.68	0.06%
HI	62.49	0.00%	3,464.33	0.05%	3,526.82	0.01%
IA	317,613.39	1.17%	261,601.60	3.99%	579,214.99	1.72%
ID	19,231.66	0.07%	6,401.50	0.10%	25,633.16	0.08%
IL	29,656.85	0.11%	16,657.12	0.25%	46,313.97	0.14%
IN	7,009.37	0.03%	4,814.82	0.07%	11,824.19	0.04%
KS	130,497.49	0.48%	20,547.78	0.31%	151,045.27	0.45%
KY	4,542.20	0.02%			4,542.20	0.01%
LA	5,136.34	0.02%	11,455.17	0.17%	16,591.51	0.05%
MA	3,032.23	0.01%	517.78	0.01%	3,550.01	0.01%
MD	616.37	0.00%	3,332.29	0.05%	3,948.66	0.01%
MI	11,344.26	0.04%	3,492.28	0.05%	14,836.54	0.04%
ME	3,604.93	0.01%			3,604.93	0.01%
MN	65,442.42	0.24%	22,851.95	0.35%	88,294.37	0.26%
MO	192,396.12	0.71%	53,186.76	0.81%	245,582.88	0.73%
MS	6,121.02	0.02%	1,537.11	0.02%	7,658.13	0.02%
MT	35,613.56	0.13%	6,977.63	0.11%	42,591.19	0.13%
NC	23,370.29	0.09%	14,162.68	0.22%	37,532.97	0.11%

Appendix B

PENSION BENEFITS SUMMARY

	School/Patrol/Judge (GROSS AMOUNTS)		Omaha Schools (GROSS AMOUNTS)		Statewide Totals	
	Gross Pension	% of Total	Gross Pension	% of Total	Total Pension	% of Total
ND	2,582.03	0.01%			2,582.03	0.01%
NE	24,574,322.43	90.40%	5,618,734.00	85.74%	30,193,056.43	89.50%
NH	575.76	0.00%			575.76	0.00%
NJ	88.54	0.00%			88.54	0.00%
NM	45,536.21	0.17%	8,804.38	0.13%	54,340.59	0.16%
NV	57,881.79	0.21%	10,231.43	0.16%	68,113.22	0.20%
NY	11,537.56	0.04%	2,987.35	0.05%	14,524.91	0.04%
OH	18,353.73	0.07%	391.56	0.01%	18,745.29	0.06%
OK	18,037.90	0.07%	22,516.40	0.34%	40,554.30	0.12%
OR	41,541.75	0.15%	8,890.91	0.14%	50,432.66	0.15%
PA	12,389.71	0.05%	6,489.08	0.10%	18,878.79	0.06%
SC	11,288.72	0.04%	4,362.41	0.07%	15,651.13	0.05%
SD	229,245.26	0.84%	13,748.68	0.21%	242,993.94	0.72%
TN	12,355.46	0.05%	8,838.57	0.13%	21,194.03	0.06%
TX	179,792.02	0.66%	77,959.28	1.19%	257,751.30	0.76%
UT	27,423.66	0.10%	9,379.15	0.14%	36,802.81	0.11%
VA	25,266.08	0.09%	9,200.33	0.14%	34,466.41	0.10%
VT	2,687.67	0.01%			2,687.67	0.01%
WA	32,456.95	0.12%	26,352.70	0.40%	58,809.65	0.17%
WI	15,123.70	0.06%	1,699.29	0.03%	16,822.99	0.05%
WV	2,334.75	0.01%	1,988.83	0.03%	4,323.58	0.01%
WY	105,558.83	0.39%	3,803.33	0.06%	109,362.16	0.32%
Armed Forces Pacific				0.00%	0.00	0.00%
BC	0.00	0.00%			0.00	0.00%
Mexico			2,003.20	0.03%	2,003.20	0.01%
	\$27,182,628	17,084	\$6,553,540	3,484	\$33,736,168	20,568

The following are brief descriptions of each pension plan under the PERB's administration. The PERB has limited authority with respect to establishing the funding policy for these five statewide retirement systems.

County Employees Retirement System

County employees participate in either the Defined Contribution or Cash Balance plan. Regardless of the benefit provision a member has chosen, the benefit is based on the accumulated account balance (employee and employer contributions and earnings). At retirement a member may elect an annuity rollover, and/or a lump sum of his/her account.

Employees contribute 4.5% of compensation [section 23-2307], with an additional 1% contribution by County law enforcement officers for counties under 85,000 in population and an additional 2% for counties with over 85,000 in population. The County employers match the members' contribution [section 23-2308] at the rate of 150%.

Employees in the Defined Contribution portion of the plan may invest their contributions in various investment options available to them. Employees in the Cash Balance portion of the plan earn a specified rate of interest (Federal mid-term rate plus 1.5% or a minimum of 5%). Dividends may be issued to members in the Cash Balance plan if actual plan earnings are sufficient, but with a required reserve of no less than 10%, per statute.

Employer contributions to the Defined Contribution benefit are directed by plan members who can choose among the same investment options that are available for their employee contributions. Employer contributions to the Cash Balance benefit earn the same rate of return as the member contributions, as specified by the plan. Members are vested in the employer funds after three years of plan participation.

State Employees Retirement System

State employees participate in either a Defined Contribution or a Cash Balance plan. Regardless of the benefit provision a plan member has chosen, the benefit at retirement is based on the accumulated account balance. A member may choose to elect an annuity at retirement rollover and/or a lump sum of his/her account.

Employees contribute 4.8% of compensation. The employer contribution is 156% of the employee's contribution [section 84-1309].

Employees in the Defined Contribution portion of the plan may invest their contributions in various investment options available to them. Employees in the Cash Balance plan earn a specified rate of interest (Federal mid-term rate plus 1.5% or a minimum of 5%). Dividends may be issued to members within the Cash Balance portion of the State Plan if actual plan earnings are sufficient, but with a required reserve of no less than 10%, per statute.

Employer contributions to the Defined Contribution benefit are directed by plan members who can choose among the same investment options that are available for their employee contributions. Employer contributions to the Cash Balance benefit earn the same rate of return as the member contributions, as specified by the plan. Members are vested in the employer funds after three years of plan participation.

Deferred Compensation Plan

This is a voluntary tax-deferred investment plan available to State and County employees. The plan is an eligible Deferred Compensation Plan under section 457 of the Internal Revenue Code. Members may contribute up to \$16,500 to the plan in 2010. The investment options are identical to those offered through the Defined Contribution component of the State and County Plans. There are no employer contributions. All expenses associated with the administration of the Deferred Compensation Plan are paid by the members of the plan through a monthly assessment against member accounts.

Judges Retirement System

This is a Defined Benefit plan with contribution levels established by statute with limited PERB responsibilities for determining additional contributions based upon information provided by the PERB's consulting actuary.

Contribution rates were changed effective July 2009. Currently, each member contributes 7% or 9% of compensation [section 24-703] until the member reaches 20 years of service at which time the rate drops to 5% of compensation or ceases altogether. The rate a member contributes both before 20 years and after depends on the choice each judge made following the enactment of an unreduced joint and survivor retirement option under LB 1097 in 2004. The plan is also funded by a \$6 court fee assessed on various court filings per section 24-703.

The PERB must have an annual valuation of the plan performed by its consulting actuary [section 24-705]. On the basis of this annual valuation, the state may be required to provide additional funds to cover any unfunded liabilities [section 24-703].

In addition, the state contributes to a COLA, which is currently funded by an annual contribution in an amount set by statute [section 24-710.07]. A retired member is eligible to receive an annual COLA after being retired one year.

Members are eligible for early, reduced retirement at age 55 or with unreduced benefits at age 65. The benefit is calculated using the final average salary of a member multiplied by total service years times a factor of 3.5%. Benefits are capped at 70% of average salary.

State Patrol Retirement System

This is a Defined Benefit plan with contribution levels established by statute with limited PERB responsibilities for determining additional contributions based upon information provided by the PERB's consulting actuary.

Contribution rates were raised in July 2009. Currently each member contributes 15% of compensation [section 81-2017]. The plan is also funded by an employer contribution of 15% of compensation. [section 81-2017]. Rates are scheduled to increase again in July 2010.

The PERB must have an annual valuation of the plan performed by its consulting actuary [section 24-705]. On the basis of this annual valuation, the state may be required to provide additional funds to cover any unfunded liabilities [section 81-2017].

In addition, the state contributes to a COLA, which is currently funded by an annual contribution in an amount set by statute [section 81-2027.03]. A retired member is eligible to receive an annual COLA after being retired one year.

Members are eligible for retirement as early as age 50 with 25 years of creditable service or at normal retirement age of 55. A member must retire upon reaching age 60. The benefit is calculated using the final average salary of a member multiplied by total service years times a factor of 3%. Benefits are capped at 75% of average salary. If a member retires prior to age 55 and does not have 25 years of service, the member's benefit is reduced by 5/9ths of 1% for every year prior to age 55 or reaching 25 years of service.

School Employees Retirement System

This is a Defined Benefit plan with contribution levels established by statute with limited PERB responsibilities for determining additional contributions based upon information provided by the PERB's consulting actuary.

Rates were raised in September 2009. Currently each member contributes 8.28% of compensation [section 79-958]. The plan is also funded by a matching employer contribution of 101% of the member's contribution [section 79-958].

In addition, the state contributes an amount equal to 7/10ths of 1% of the compensation of all members in the system. This was raised to 1% of compensation effective July 2009. The state also contributes to a COLA, which is currently funded by an annual contribution in an amount set by statute [section 79-947.01]. A retired member is eligible to receive an annual COLA after being retired one year.

The PERB must have an annual valuation of the plan performed by its consulting actuary [section 79-966]. On the basis of this annual valuation, the state contributes an amount sufficient to cover the state service annuity [section 79-966].

Under certain circumstances, members may purchase additional years of service credit (such as out-of-state public school service). For members hired or rehired on or after July 1996, these service credit purchases must be purchased on the basis of full actuarial cost to the system [sections 79-933.05, 79-933.06, and 79-933.08]. The PERB's consulting actuary provides actuarial cost tables for the PERB to determine the amount to be paid by the member for the additional service so that the impact to the plan for allowing this additional service is actuarially neutral.

A member may retire as early as age 55 with 30 years of service on an unreduced basis, or upon reaching the "Rule of 85" if age 55 or older, or at normal retirement age of 65. Benefits are calculated by multiplying the average of the member's high three years of salary by total creditable service times a factor of 2%. There is an early retirement reduction prior to age 65 if the member does not meet the "Rule of 85."

Defined Benefit Plan/Actuarial Assumptions

Based upon annual actuarial valuations of the three Defined Benefit Plans as well as quadrennial experience studies, the PERB's actuary recommends actuarial assumptions to the PERB. The assumptions are key to the ongoing funding of the plans.

Actuarial assumptions are included for:

- Investment rates of return
- Salary changes
- Withdrawal rates
- Retirement rates
- Post-retirement mortality rates

In 1996, the PERB adopted a "smoothing of assets" policy for the recognition of investment returns by the three plans. As recommended by the actuary, this policy requires that annual investment gains and/or losses be amortized over five years to avoid significant variations in funding from year to year.

In 2000, a study to review the actuarial funding methods was undertaken by our consulting actuary. An actuarial experience study was completed in the fall of 2007 resulting in changes to the various assumptions used for plan funding. The study was presented to the Legislative Retirement Committee under the provisions of LR 101 on November 20, 2007. A study of this kind is generally recommended every five years.

■ Board Policy #1

Revised March 2010

Board Duties and Governance

1. DUTIES

The Public Employees Retirement Board is created by and shall comply with Neb. Rev. Stat. §84-1501 to §84-1513. The Board's duties include, but are not limited to the following:

- To administer the County Employees, Judges, Nebraska State Patrol, School Employees, and State Employees Retirement Acts and the voluntary Deferred Compensation Plan authorized in §84-1504.
- To appoint a Director to whom responsibility for the daily operations of the systems is delegated, within limitations established by the Board, and governed by statute.
- To provide oversight of the Director and the operation of the Retirement Systems agency.
- To approve and adopt Rules and Regulations for the governance of the Retirement Systems agency, as governed by statute.
- To establish policies for Board governance and duties.
- To determine actuarial and other financial assumptions used to predict future assets and liabilities of the various Retirement Systems as provided by statute, and which will inform and assist the Nebraska Investment Council in managing the assets of the Retirement Systems.
- To approve the agency budget and allocation of expenses.
- To hire an attorney to advise the Board in legal matters as they relate to the administration of the retirement systems.
- To hire an internal auditor to perform internal auditing functions and to advise the Board in those matters as they relate to the administration of the retirement systems.
- To prepare an annual written plan of action regarding agency achievements and priorities to be presented to the Nebraska Retirement Systems Committee of the Legislature at a public hearing by March 15 of each year.

- To obtain, by competitive bid, actuarial services on behalf of the State of Nebraska as necessary for administration of the retirement systems.
- To obtain, by competitive bid, auditing services for a separate compliance audit by December 31, 2007, and at least every ten years thereafter.
- To administer all Retirement Systems in a manner which will maintain each plan's status as a qualified plan pursuant to the Internal Revenue Code.
- To review and approve all member disability claims.
- To review and approve all hardship withdrawals from the Deferred Compensation Plan.
- To consider all member appeals according to the Administrative Procedure Act and Retirement System Rule and Regulation Chapter 12.

2. GOVERNANCE

A. Conduct of Meetings – meetings of the Public Employees Retirement Board shall be held in accordance with open meetings provisions set forth in Neb. Rev. Stat. §84-1408 to §84-1414, Board statutes set forth in Neb. Rev. Stat. §84-1501 to §84-1513, and Retirement Systems Rule and Regulation, Chapter 1 – Board Management.

- i. Regular Meetings** – regular meetings of the Board shall be held once each month. Meetings will be held at a location determined by the Board. Meeting dates can be changed by consensus of the Board. A tentative schedule of meetings will be adopted in December of each year for the following year.
- ii. Special Meetings** – special meetings of the board may be held whenever called by the Chairperson or by not less than three Board members. The Secretary shall give notice to each Board member of such special meeting by mail, by facsimile transmission or by other electronic means at least three days before the meeting, with reasonable advance public notice given outlining the reason for the meeting and availability of the agenda.
- iii. Emergency Meetings** – when it is necessary to hold an emergency meeting of the Board without reasonable advance public notice, care shall be taken to comply fully with open meetings statutes.

B. Agenda - The agenda for each meeting shall be prepared by the Director. Items shall be placed

on the agenda at the discretion of the Director or the Chairperson, subject to the following:

- i. Except for items of an emergency nature, the agenda shall not be altered later than 24 hours before the scheduled commencement of the meeting. Items of an emergency nature shall be added to the agenda only at a public meeting and only after a finding by the Board that the matter is one which requires immediate action by the Board which cannot be delayed until the next public meeting.
 - ii. Items may be placed on the agenda at the request of individual members subject to approval by the Chairperson or Director.
 - iii. The agenda shall be kept continually current and shall be readily available for public inspection at the office of the Retirement Systems during normal business hours.
- C. Officers** – each year, in January, the Board shall elect a Chairperson, a Vice Chair and a Secretary. The terms of such officers shall be from the date elected until a successor is elected.
- i. **Eligibility** – a board member must have served at least one full year as a member of the Board to be eligible for election to the position of Chair or Vice-Chair. The ex-officio, non-voting member of the Board shall not be eligible to serve as an officer.
 - ii. **Procedure** – nominations may be made by any voting member of the Board. If requested, a secret ballot may be taken for the vote. The winner must receive a majority of the votes of those present to win.
 - iii. **Duties of Chairperson** – the duty of the Chair is to see that the Board operates consistent with its own rules and those legitimately imposed on it from outside the Retirement Systems by State or Federal Law. The Chair will ensure the following:
 - a. Meeting discussion content will be related to the published agenda;
 - b. Deliberation will be timely, fair, orderly and thorough; but also efficient, limited in time and kept to the point.
 - iv. **Authority of Chair** – the authority of the Chair consists only of making decisions on behalf of the Board that fall within and are consistent with Board policies. This includes:
 - a. The Chair is empowered to chair Board meetings with all the commonly accepted power of that position (e.g., ruling, recognizing, etc.)
 - b. The Chair has no authority to make decisions beyond policies created by the Board and specifically within the *Director's Duties & Limitations of Authority (Policy #3)*.
 - c. The Chair may represent the Board to outside parties either in simply announcing Board-stated positions or in stating Chair decisions and interpretations within the area delegated to him or her.
 - d. The Chair may also: convene meetings of the Board, per statute; certify actions of the Board; name Retirement Board members to committees; and perform other duties requested from time to time that are deemed necessary and appropriate for the Board to fulfill its duties and responsibilities by statute.
- v. Duties of the Vice Chair** – the Vice Chair is to act as temporary chair in the absence of the regular chair and may perform those duties imposed on the Chair.
- D. Committees** – The Board establishes committees in order to help carry out its responsibilities. When committees are used, the Chair shall appoint Board members to committees. The committees, per Rule & Regulation #1, shall be composed of not more than four members. No committee meeting shall have so many Board members present that it would constitute a meeting of a public body for purposes of Chapter 84, Article 14 of the Nebraska Revised Statutes. The Chair may also appoint the chairperson of each committee. Committees may not take formal action on behalf of the Board, nor represent the Board without prior approval of the full Board. All committee findings and recommendations require formal action of the Board to be binding upon the Board. Committees may include, but are not limited to the following:
- i. **Policy and Planning Committee** – shall review current Board policies, proposed rules and regulations and recommend revisions, additions and deletions to the Board and assist with establishing a long-range plan in the areas of benefits, funding, technology, member services, education and communication. This includes overview of the agency's annual report to the Legislature.

- ii. **Legislative and Audit Committee** – shall review all pending legislation, be available to attend public hearings and advise the Board of trends that may affect the Systems; review annual audits; and make recommendations to the Board as needed.
- iii. **Budget and Personnel Committee** – shall review the budget and monthly expenses, assist with the review of service contracts at the time of renewal or rebidding, and make recommendations to the full Board. The committee shall also establish a schedule for the performance evaluation of the Director; collect and summarize individual evaluations to be reported to the full Board and recommend appropriate action. The committee shall also review the performance evaluation report conducted by the Director on the agency Legal Counsel and Internal Auditor and submit a recommendation to the full Board.
- iv. **Education and Retreat Committee** – is responsible for the promotion of Board education; recommends topics and appropriate speakers for educational portion of Board meetings and outlines objectives for annual retreat.
- v. **Any other ad hoc committee as necessary.**

■ Board Policy #2

Revised September 2006

Board Code of Conduct

The Public Employees Retirement Board expects of itself and its members ethical and businesslike conduct.

- A. Board members, as fiduciaries defined in Neb. Rev. Stat. § 84-1503.02, shall discharge their duties solely in the interest of the members and beneficiaries of the retirement systems for the exclusive purposes of providing benefits to members and members' beneficiaries and defraying reasonable expenses incurred within the limitations and according to the powers, duties, and purposes prescribed by law.
- B. Board members are responsible for preparing themselves for Board work. They shall act with the care, skill, prudence, and diligence under the circumstances then prevailing that a prudent person acting in like capacity and familiar with such matters would use in the conduct of an enterprise of a like character and with like aims. (Neb. Rev. Stat. § 84-1503.02 (2)).
- C. Board members must avoid any conflict, or perceived conflict of interest with respect to their fiduciary responsibility.
 - 1. There must be no self-dealing or any conduct of private business or personal services between any Board member and the Retirement Systems.
 - 2. Board members must not use their positions to obtain employment within the Retirement System for themselves, family members, or close associates.
 - 3. Should a Board member be considered for employment, he or she must not have been a member of the Board for at least ninety (90) days prior to the date of such employment.
 - 4. Board members must file a "Potential Conflict of Interest Statement" with the Nebraska Accountability and Disclosure Commission whenever a potential conflict arises. A potential conflict of interest exists when a board member, in the discharge of his or her official duties, would be required to take an action or make any decision that may cause financial benefit or detriment to him or her, a member of his or her immediate family, or a business with which he or she is associated which is distinguishable from the effects of such action on the public generally, or a broad segment of the public. (Neb. Rev. Stat. § 49-1499.02).
- D. "Statements of Financial Interests," as provided under the Nebraska Accountability and Disclosure Act, Neb. Rev. Stat. §49-1401 to §49-14,140 shall be filed by each Board Member on or before April 1st of each year for the prior calendar year. A filing is to also be made within 30 days after leaving the Board. One copy of the filing is to be sent to the Nebraska Accountability and Disclosure Commission and another copy with the election commissioner in the Board member's county of residence.
- E. Board members may not exercise individual authority over the Retirement System except as explicitly set forth in Board policies.
- F. The Chairperson of the Board shall be the ex-officio spokesperson, both on routine matters and in the absence of a realistic ability to convene the Board for approval of a statement of policy. The Board may designate a member or members of the Board to communicate a Board-approved policy or statement.

- G. The Board will not advocate for benefit improvements for any of the retirement systems that it administers, but may make comments and provide guidance on any changes proposed by the Legislature or by other groups with an interest in the Retirement System. In any proposed changes to retirement benefits, it is the goal of the Board to implement changes in such a way as to be the most beneficial to the members and the most effective use of the money needed to fund the increased benefits. (Neb. Rev. Stat. § 84-1503.02(2)).

■ Board Policy #3

Revised August 2007

Director’s Duties and Limitation of Authority

The Board shall appoint a director to administer the retirement systems under the direction of the Board. The Board shall be responsible for oversight of the director and the operation of the Retirement Systems agency. The appointment shall be subject to the approval of the Governor and a majority of the Legislature. The director shall be qualified by training and have at least five years of experience in the administration of a qualified public or private employee retirement plan. The Director shall not be a member of the Board. The salary of the Director shall be set by the Board. The Director shall serve without term and may be removed by the Board. (Neb. Rev. Stat. §84-1503(1)(b)).

Director Duties and Responsibilities:

The director is the chief administrative officer of the Retirement Systems and is responsible for the overall planning, organization, development, supervision, directing and coordination of the on-going operations of the systems.

Responsibilities, in addition to the internal operation, include liaison with member groups, the Legislature, the Board, agency attorney, internal auditor, and the consulting actuary for the Board. The director serves as an ex-officio member of the Nebraska Investment Council. Work is performed with considerable latitude under the general direction of the Board.

EXAMPLES OF DUTIES AND RESPONSIBILITIES:

- Coordination, training and supervision of staff for six pension plans, involving complex details and procedures.
- Interpretation and execution of statutes and Board policies.
- Development and implementation of sound fiscal and accounting procedures and records.
- Consult with and make recommendations to the Governor and the Legislature on major pension benefit issues, as directed by the Board.

Required Knowledge, Skills and Abilities:

The director must have: strong management and communication skills; knowledge of state and federal pension laws as applied to public plans; knowledge of general financial and management characteristics of financial institutions and strategic planning skills to set short and long-term goals for the agency and the various pension systems.

SPECIFIC DUTIES:

1. Supervises and coordinates several statewide benefit programs involving complex procedural details, a high volume of transactions, and diverse statutory basis.
2. Analyzes proposed legislation, makes and drafts recommendations on proposed legislation, appears before Legislative Committees during regular sessions and interim study periods. Prepares fiscal notes on proposed legislation.
3. Recommends all necessary rules and regulations relating to the administration, interpretation, and construction of the Retirement Laws.
4. Insures compliance with Federal and State laws in the management and operation of the systems.
5. Coordinates with the consulting actuary regarding all actuarial duties required by law.
6. Establishes the agenda and matters for consideration by the Board, and oversees the preparation and maintenance of the minutes of the meetings of the Board.
7. Performs public contact work in gathering information, resolving problems, engendering support, and providing information required by the Board and Legislature.

8. Prepares recommendations and justification for changes in procedures, budget requests, personnel, and office activities.
9. Directs the preparation and conduct of research required in support of the Board's mandates and Legislative matters.
10. Collects, interprets, analyzes, and summarizes information to be utilized as the basis for recommendations to the Board and Legislature.
11. Directs, manages, and supervises an efficient internal operation of the Retirement System staff to achieve the primary objectives of the fund in accordance with procedures established by the Retirement Board.
12. Hires the Retirement staff in accordance with the budget prescribed by the Board and Legislature.
13. Authorizes expenditures and pays salaries and claims against the Retirement System in accordance with the budget proposed by the Retirement Board and approved by the Legislature.
14. Constantly appraises the Retirement Board of any development that would in any way affect the Retirement Board and its operation.
15. Makes the initial decision on behalf of the Board on any matter in which an appeal to the Board is authorized by statute, unless otherwise limited by this policy, or rule or regulation. Thereafter, upon appeal by the member, to appoint a Hearing Officer and to refer such Officer's findings to the Board for action.
16. Recommends action on disability claims and hardship withdrawals from the State Deferred Compensation Plan for Board consideration.

Limitations of Authority:

THE BOARD SHALL:

1. Approve all disability claims.
2. Approve all hardship withdrawals from the State Deferred Compensation Plan.
3. Approve Rules and Regulations for adoption.
4. Determine the funding policy for the plans as provided by statute.
5. Approve agency budget.
6. At its discretion, authorize the Director to execute such contracts as have been approved by the Board.

7. At its discretion, authorize the Director to amend existing contractual service contracts with providers when additional services are required of that provider to implement board or legislative initiatives. The cost of the additional services requested of the provider by the Director cannot exceed those dollar limits set forth by the Department of Administrative Services requiring a competitive bidding process.

Board Policy #4

Revised August 2007

Legal Counsel & Internal Auditor

DUTIES & REPORTING

1. **Legal Counsel** – The Public Employees Retirement Board shall hire an attorney, admitted to the Nebraska State Bar Association, to advise the Board in the administration of the retirement systems under its statutory authority, NEB. REV. STAT. § 84-1503 (1) (e).
 - a. The attorney or legal counsel to the Board shall work with the Director. The legal counsel shall routinely advise the Board on legal matters as they relate to the administration of the Retirement Systems, and shall advise the Director when such advice shall not be in conflict with the legal counsel's duty to the Board, on the following:
 - Legal issues affecting members' records and entitlements
 - Legal issues affecting investments
 - State and local legal issues affecting system processes and procedures
 - Federal government mandates on plan administration and benefits
 - Legal issues on payment of benefits
 - Potential conflicts
 - Pending appeals and potential litigation
 - Pending legislation
 - Any other legal issues of interest
 - b. The legal counsel to the Board shall act in the best interest of the Board and at least once per year shall report to the Board any matters that in his/her professional judgment impact on the Board's role and duties. The Legal Counsel shall have direct access to the Board or a committee of the Board.

- c. At least annually a performance evaluation of the legal counsel shall be conducted and reported to the Board by the Director. The legal counsel shall at that time also provide a report to the Board of his/her activities for the previous year.
- 2. Internal Auditor** – The Public Employees Retirement Board shall hire an internal auditor meeting the minimum standards as described in NEB. REV. STAT. § 84-304.03 to perform the duties described in NEB. REV. STAT. § 84-1503.04. (NEB. REV. STAT. § 84-1503 (1) (f)).
- a. The role of “internal auditor” is to assure that applicable laws, regulations, policies and procedures are being followed. The duties and responsibilities of the internal auditor are to be consistent with the suggested standards for the professional practice of internal auditing as adopted by the Institute of Internal Auditors, and include the following:
 - Prepare a formal written three-year audit plan and work schedule each year and present them to the Board;
 - Conduct ongoing reviews of the internal procedures of the retirement systems and recommend improvements to the Board;
 - Ensure that Nebraska public employees retirement systems’ internal accounting and operational controls are appropriate and operating correctly and report inconsistencies to the Board;
 - Examine and evaluate system records and operating procedures; verify compliance with established plans, policies, procedures, and control systems, and assure compliance with regulatory and statutory conditions and adherence to generally accepted accounting and auditing principles and report inconsistencies to the Board;
 - Perform internal auditing functions, including review of contributions received and creditable service granted; review benefit payments for completeness of information, appropriateness, accuracy, and timeliness; verify accuracy of data and financial information reported to the system’s actuary for all applicable plans; and verify accuracy of data and financial information reported to the system’s record keeper for all applicable plans; and
 - Develop standards to be used by independent auditors in their review of the

practices and procedures used by various employers to provide for employee participation in the respective state plans included in subdivision (1)(a) of NEB. REV. STAT. § 84-1503

- b. The internal auditor shall act in the best interest of the Board and at least once per year shall report to the Board any matters that in his/her professional judgment impact on the Board’s role and duties. The Internal Auditor shall have direct and immediate access to the Board or a committee of the Board.
- c. At least annually, a performance evaluation of the internal auditor shall be conducted and reported to the Board by the Director. The internal auditor shall at that time also provide a report to the Board of his/her activities for the previous year.

■ Board Policy #5

Revised September 2005

Reviewing Applications for Disability Retirements – Board Actions

- A. The Public Employees Retirement Board will approve applications for disability retirements in a manner consistent with controlling statutory authority and will avoid, as much as practicable, a case by case disposition of such matters.
 - 1. With respect to disability applications in the State, County and School retirement plans, the Board’s inquiry shall focus on whether the applicant has incurred a disability that involves an inability to engage in a substantially gainful activity by reason of any medically determinable physical or mental impairment which can be expected to result in death or be of a long and indefinite duration.
 - 2. With respect to the Judges Plan, the Board shall receive and act upon the findings of the Commission on Judicial Qualifications when considering the disability of a judge. For clerk magistrates who are in the judges plan, the Board shall determine if he or she has become physically or mentally disabled in a manner which seriously interferes the performance of his or her duties and that is determined to be permanent or reasonably likely to become permanent.
 - 3. With respect to the State Patrol, the Board shall determine whether a member has

incurred a disability that constitutes a complete inability of the officer, by reasons of accident or sickness, to perform the duties of an officer of the State Patrol.

- B.** With respect to disability applications for members of the State, County, School retirement plans and for clerk magistrates who are members of the Judges plan; the Director shall direct that a medical examination be made at the expense of the retirement system, which examination shall be conducted by a disinterested physician legally authorized to practice medicine under the laws of the state in which he or she practices, such physician to be selected by the retirement board, and the physician shall have certified to the board that the member is physically or mentally incapable of further performing his or her duties as a state, county or school employee and should be retired. When the director is satisfied that a sufficient examination had been made, the Director shall present the results of the examination and a recommendation to the Board, and the Board shall grant or deny the disability retirement application based on the examination and report of the physician, assisted by the recommendation of the Director.
- C.** With respect to any Judge, the Board shall receive the report of the Commission on Judicial Qualifications that determines that a judge is permanently disabled; the Board shall then place the judge on retirement and grant a retirement annuity as provided in § 24-710.
- D.** With respect to a member of the State Patrol, the Board shall not make any disability benefit payments unless adequate proof is furnished of the existence of the disability, and the Director, on behalf of the board, may demand a physical examination of the member by a disinterested physician legally authorized to practice medicine under the laws of the state in which he or she practices, chosen by the system and at the expense of the system.
- E.** The Director, with the approval of the Board, may engage one or more Medical Advisors to assist the Director and the Board in analyzing the reports sent by physicians who have examined disability retirement applicants. The medical advisor shall be a physician legally authorized to practice medicine in Nebraska and hired by the Director, with the advice and consent of the Board. The duties of the Medical Advisor shall include, but shall not be limited to, the following:
1. Review all physicians' reports prior to the time at which the Director and/or Board reviews the reports.
 2. Do any follow-up gathering of information the Medical Advisor deems necessary to fully understand the physicians' reports he or she has the duty to review.
 3. Appear before the Board and assist the Director as he or she presents the reports of disinterested physicians to the Board and the Director's recommendation for action during any Executive sessions convened for that purpose.
 4. Answer questions about the reports that may be asked by the Director or members of the Board, provide expert assistance and knowledge of a trained physician to the Director and the Board in analyzing the medical questions involved in determining whether a disability retirement is appropriate, and provide his or her opinion on the medical condition of applicants, based on the reports he or she has reviewed.
 5. Any other such duties as the Director or the Board may deem necessary and appropriate to determine whether disability retirements should be granted to those who have made application under the applicable statutes.
- F.** With respect to disability applications in which the disinterested physician states that the member is a person meeting the description of an incapacitated person as found in Neb. Rev. Stat. § 30-2601, the Board shall make reasonable inquiries as to whether it is satisfied by clear and convincing evidence that (i) the applicant is unable to manage his or her property and property affairs effectively for reasons such as mental illness, mental deficiency, physical illness or disability, chronic use of drugs, chronic intoxication, confinement, or lack of discretion in managing benefits received from public funds, detention by a foreign power, or disappearance; and (ii) the person has property in the retirement system which will be wasted or dissipated unless proper management is provided, or that retirement funds are needed for the support, care, and welfare of the applicant or those entitled to be supported by him or her and that protection is necessary or desirable to obtain or provide funds.
- If the Board finds that such conditions are met, the Board may direct that a guardian, guardian for a limited purpose or conservator should be appointed under the provisions of the Nebraska Probate Code, Neb. Rev. Stat. Chapter 30 Article 26, prior to the Board allowing such an applicant to select a retirement option or otherwise allow the release of monies held by a retirement system on behalf of such an applicant.

- G. All disability retirement applications approved by the Board may be re-evaluated one year from the effective date of retirement. The re-evaluations shall be made by a disinterested physician licensed to practice medicine in the state in which he or she practices medicine, under the conditions set forth in paragraph J of this policy.
- H. If a member’s disability retirement application is re-examined and continually approved for at least three years, the Public Employees Retirement Board may determine when the next reevaluation shall occur.
- I. If an applicant dies during the period between making application for a disability retirement and the Board’s approval of the applicant’s application, the Board and Director may examine such applicant’s death certificate and the report of a disinterested physician, if available, to make a determination on the disability application filed by the deceased applicant.
- J. When ordering an examination by a disinterested physician both for initial and any further examinations, the Director and Board shall, if practicable, choose a disinterested physician who specializes in the area of medicine relating to the reason or source of disability as given by the applicant on his or her application.
- K. Information provided in an application for disability includes medical records that contain personal and sensitive information that if improperly used or released may do significant harm to an applicant’s interests or needless harm to an applicant’s reputation. All review of members’ disability applications shall take place in Executive Session, and all information submitted and discussed shall be kept confidential by the Board, the Director and their agents.

■ Board Policy #6

Revised March 2010

Contractual Services Policy

In all cases, selection of contractual services is subject to and shall comply with the provisions of Chapter 73, Article 5, Nebraska Revised Statutes.

1. CONTRACT RENEWAL OPTION

The Director shall provide the Board a review of the performance of contract service providers not less than six months prior to the expiration of the contract. If performance under the contract is deter-

mined to be satisfactory, the Board may consider renewing the contract for an additional term.

The contract service provider may be requested to submit a renewal and cost proposal to the Board for consideration within 180 days of the contract expiration, unless statutes otherwise provide. (See e.g. §84-1503 (2) (e), actuarial services; §84-1503 (2) (h), compliance audit.)

2. CONTRACT BIDDING PROCESS

Not less than six months prior to the expiration of a service contract, the Director will draft a request for services proposal (RFP) for the Board’s review. Upon the Board’s approval, the Director shall, with the assistance of the Department of Administrative Services, Materiel Division, publish the RFP and follow the required procedures for the bidding process.

The Director shall, with the assistance of NPERS staff counsel and other management staff as needed, review all bids that qualify under the stated RFP requirements.

As soon as reasonably possible, the Director shall provide a summary of the proposals to the Board and a tentative finalist interview schedule. The Board or a committee of the Board will review the finalist bid proposals in advance of the scheduled interviews.

The Board or a committee of the Board and the Director will interview all finalists. The award of the contract will be subject to a majority vote of the Board during a regular or special session of the Board.

The following is a schedule of existing contracts:

CONTRACT	TERM	COMPLETED	DUE
Compliance Audit	4–10 yr.	2002	2012
Actuarial Services	3 yr.	2007	2010
Actuarial Audit	10 yr.	2009	2019
Experience Study	4–5 yr.	2007	2012
Recordkeeping Services	3–5 yr.	2006	2011
Information System	1 ½–2 yr.	2009	2010

3. EXCEPTIONS

If the existing contract is not renewed under paragraph 1 of this policy, the bidding process for the annual contract to provide Deferred Compensation Plan annuities will be conducted in-house by the Director and agency staff and shall not use the services of the Department of Administrative Services, Materiel Division.

The Board will review the draft request for proposal (RFP) each year in March. The final RFP will be

published prior to May 1st of each year. Proposals will be considered during the meeting of the Board held in June, with a contract beginning date of July 1st.

All annuity providers must be rated within the top four rating grades by at least one of the following national credit rating services: A. M. Best, Duff & Phelps, Moody's, and Standard & Poor's. In addition, issuers should be within the top five rating grades (level "B" or above) by TheStreet.com. Existing contracts may be grandfathered under this guideline and may be allowed to mature as scheduled.

■ **Board Policy #7** Revised September 2006

Challenging Service Credit Under Neb. Stat. 79-907.

This policy is formulated pursuant to § 79-907, which requires the Board to set out a procedure for members to challenge statements of creditable service sent to such members by certified mail.

1. A member must inform the Director that he or she wishes to challenge the statement of creditable service.
2. Upon receipt of the notification of a challenge, the Director shall send a letter explaining the procedure and notifying the member of the steps needed to complete a challenge to the statement of creditable service. The letter shall inform the member of the necessary documentation that will be needed to perfect the challenge.
3. If the member does not provide the necessary documentation within 90 days of filing the challenge, the member shall be deemed to have waived the protest, and shall be barred from challenging the statement thereafter.
4. If the member perfects the challenge, the Director shall have 60 days from the receipt of the documentation to make a determination. The burden of proof is on the member to show by clear and convincing evidence that the statement of creditable service is in error. The Director, in making this decision, shall consider the documentation sent by the member and the records kept by NPERS. The Director shall grant or deny the challenge and proposed modification of the statement and inform the member of his or her decision not later than 60 days after the documentation has been received.
5. If the member wishes to appeal the Director's determination to the Board, the member shall

have 30 days from the date of the Director's determination to appeal to the Board, pursuant to § 79-950. Appeals from the Board decision shall be made pursuant to the Administrative Procedures Act.

■ **Board Policy #8** Revised September 2006

Conference Attendance and Expense Reimbursement Policy

The members of Public Employee Retirement Board (PERB) believe the affairs of the plans they administer are highly important and complex. The retirement obligations incurred and the administration of the plans are complex matters, and education in employee benefit matters is necessary. It is important for PERB members to be educated in matters relating to the plans they administer. PERB members are encouraged to attend one or more educational conference per year. These policy guidelines are adopted to address travel expenses related to educational conference attendance.

1. PERB members shall make travel requests to the Board at least 30 days in advance when possible.
2. Each request for travel by a Board member will include a business-related reason for that travel and an estimate of the cost.
3. Hotel and air travel reservations can be made by the Board member or the retirement office.
4. Travel by any Board member outside of Nebraska will be reviewed by the Board; a majority decision will prevail.
5. Any Board member who attends a conference or seminar will present either an oral or written report to the Board at the next meeting.
6. Special consideration will be given for the support of the conventions or seminars sponsored by the following organizations:
 - NCTR (National Council on Teacher Retirement)
 - NASRA (National Association of State Retirement Administrators)
 - NCPERS (National Council Public Employee Retirement Systems)
 - IFEBP (International Foundation of Employee Benefit Plans).
7. Board members attending the annual Board retreat shall have their actual expenses for official busi-

ness paid by the agency in conformity with the Travel Expense Policies adopted by the Nebraska Department of Administrative Services, AM005.

8. Per diems will be paid to board members for activities that have been approved by the board at the rate allowed by law.
9. Board members will be reimbursed for actual costs for out-of-town meals in Nebraska not to exceed the maximum GSA meal guidelines. Board members must retain a record (log) or obtain receipts for each meal incurred while in travel status. The expense reimbursement document may be used as the Board member’s record of travel expenses incurred. In lieu of obtaining and attaching original receipts for each meal incurred, the member may identify type of meal, actual amount paid, including tax and tip, restaurant name and location on the expense reimbursement document.

ELIGIBLE MEALS ARE:

- a. **Breakfast** – when leaving for overnight travel or one-day travel on or before 6:30 a.m.
- b. **Lunch** – when leaving for overnight travel at or before 11:00 a.m. or return from overnight travel at or after 2:00 p.m. Lunch is not allowed on one-day travel unless part of an official business meeting with a working lunch part of the agenda.
- c. **Supper** – when returning from overnight travel or one-day travel at or after 7:00 p.m.

Board members will be reimbursed for actual meal costs in excess of the IRS guidelines if receipts for meals are attached to the expense reimbursement document.

10. Board members will be reimbursed for meals outside of Nebraska for reasonable and actual cost. Reasonable costs are the federal per diem standard. The standards can be found at Internet site: <http://www.gsa.gov/Portal/gsa/ep/home.do?tabId=0>.
11. Lodging for Board members will be reimbursed based on actual cost incurred while attending an official business function. If the meeting or conference is at a lodging establishment and the Board member chooses not to stay at the conference lodging establishment, other lodging may be reimbursed at reasonable amounts comparable to the posted conference room rate. Actual costs will be demonstrated by an original receipt.
12. In order to receive reimbursement, a Board member must complete an expense reimburse-

ment document and attach actual receipts for all travel expenses except meals and immaterial travel expenses. Immaterial items are parking, tolls, inter-city bus fares, baggage handling, tips, and taxi fare charges under \$10 per occurrence. Board members will be reimbursed for the use of their personal vehicles for official Board business. Reimbursement will be made in accordance with Neb. Rev. Stat. §811176, at the rate per mile established by the Department of Administrative Services.

13. Board members will be reimbursed for one long distance call per day to their home while in travel status in accordance with the approved agency policy on file with the Department of Administrative Services.
14. No reimbursement is allowed for alcoholic beverages.

■ Board Policy #9

Revised February 2010

Materiality Policy

OBJECTIVE

The objective of this policy is to establish materiality amounts or tolerance levels for various accounting and processing procedures within the agency.

RISKS

The following risks or inefficiencies could occur if a materiality policy is NOT established:

- The cost plan members incur in our agency expenses for staff time, data processing, materials, postage, etc. in processing transactions that may be more than the value of the transaction itself
- Data processing cannot be as timely or efficient if tolerance levels are not available for some editing and processing functions
- Agency could be subject to criticism from outside parties if they feel transaction amounts we are pursuing are immaterial

The following risks could also occur if a materiality policy IS established:

- Could be implied that we are not in “absolute” compliance with some statutes
- Very low risk of abuse by employers.

DEFINITIONS

As defined in Government Auditing Standards, an auditor's consideration of materiality is a matter of professional judgment and is influenced by their perception of the needs of a reasonable person who will rely on the financial statements. Materiality judgments are made in light of surrounding circumstances and necessarily involve both quantitative and qualitative considerations. An error or omission is considered material or significant if it changes a reader's interpretation of the financial statements. Materiality amounts that will be addressed in this policy could never have an effect on the reliability of our financial statements due to the size of the plans we administer.

OVERVIEW

While the agency has a legal requirement to comply with all statutes, we also have a fiduciary obligation to the plan members to spend their funds wisely and efficiently. The need for materiality amounts within the agency has been apparent in the definition of tolerance levels within our NPRIS system for various edits, parameters, etc. The question has also arisen in all of the audits completed by the State Auditors' Office, and it is felt that a number of audit issues could be eliminated if materiality amounts were established by the agency. The Auditors' Office has suggested that a policy regarding materiality amounts for agency processing be adopted by the Board.

There is no written policy within the State Accounting Office regarding materiality levels; they simply have different levels of review and approval authority tied to different transactions.

Materiality Amounts for Agency Transactions

Employer Reporting

- No receivable or payable will be created if remittances from school employers for monthly contributions are within +/- \$10.00 of the required amount.
- Schools will not be billed if the "late interest" amount calculated on a monthly late remittance is less than \$10.00.

Purchase of Service

- Payments from members or rollover payments for purchase of service or refunded service will be receipted as payment for contract completion if the payment is within +/- \$10 of the amount due.

Recalculation of a Final Benefit

- For Defined Benefit plans – The monthly retiree benefit payments that require recalculation will not be adjusted if the change in the monthly benefit amount is within +/- \$10.00 of the original calculated final benefit.
- For State and County plans – The monthly defined contribution and cash balance retiree benefit payments that require recalculation will not be adjusted if the change in the monthly benefit amount is within +/- \$10.00 of the original calculated final benefit.

Make-up Contributions Agreements

- For Defined Benefit plans - In the case of a contribution error, if the calculation of the missed contribution for the employee and employer in total is \$30 or less, no make-up will be required.
- For State and County plans - If the calculation of a missed contribution of employer and employee in total is \$5 or less, no make-up will be required.

Refund Buy-Back Purchase

- If the variance between the calculated refund amount (the amount before the applicable rate of interest is added on) and the member's actual refund distribution is within .5%, then the calculated amount will be accepted as valid.

Board Policy #10

Revised August 2008

Board Funding Policy

Defined Benefit Plans – The Public Employees Retirement Board administers the three traditional Defined Benefit plans authorized by State Statute. In order to protect the benefits provided by the plans the Board endorses the statutory funding requirements, as follows:

- a. The School Employees Retirement Plan, which covers all school employees, teachers and administrators in Nebraska, with the exception of the separate Omaha Public Schools plan, shall be funded each year in accordance with the actuary's recommendation. The primary source of funding, as outlined by Section 79-958, shall be the monthly employee and employer contribution rates and the required annual contribution outlined by Sections 79-966 and 79-966.01 for the State of Nebraska.
- b. The State Judges Retirement Plan, which covers all state judges and certain clerk magistrates, shall be funded each year in accordance with the

actuary's recommendation. The plan is primarily funded by employee contributions and court fees and any required annual contribution by the State of Nebraska outlined in Section 24-703.

- c. The State Patrol Retirement Plan, which covers all uniformed or certified patrol officers, shall be funded each year in accordance with the actuary's recommendation. The plan is primarily funded by employee and employer contributions and annual contributions by the State of Nebraska as outlined in Section 81-2017.
- d. It is recognized that in all three of these Defined Benefit plans the investment return on the assets is a vital part of the funding for the plans. In addition, the annual actuarial valuation is the source each year for determining any additional contributions needed for a given year.
- e. The Board will review the actuarial assumptions used to determine funding needs, on a regular basis, but change those assumptions only on the basis of a recent experience study or if the actuary recommends a review due to a significant change in the factors used to determine the assumptions. An experience study shall be conducted every four to six years.

Cash Balance Benefit - The Public Employees Retirement Board administers the two hybrid Defined Benefit plans authorized by State Statute. In order to protect the benefits provided by the plans the Board endorses the statutory funding requirements, as follows:

- a. The State Employees and the County Employees Retirement Plans include a new Cash Balance benefit that must be actuarially sound. These plans cover state and county employees and are primarily funded by employee and employer contributions as well as any required contribution by the State of Nebraska.
- b. It is recognized that the investment return on the assets is a vital part of the funding for the benefits. In addition, the annual actuarial valuation is the source each year for determining any additional contributions needed for a given year.
- c. The Board will review the actuarial assumptions used to determine funding needs, on a regular basis, but change those assumptions only on the basis of a recent experience study or if the actuary recommends a review due to a significant change in the factors used to determine the assumptions. An experience study will be conducted every four to six years.
- d. Investment returns greater than or less than the assumed annual rate of return will be recognized on a "smoothed" basis over a five year period.

- e. Each year after the annual actuarial valuations results are received the Board will determine, based on the recommendation of the actuary, if a benefit improvement can be made, such as a dividend payment to individual Cash Balance member accounts, after allowing for the required ten percent funding reserve within the plan.

If it is determined that the benefit improvement should be a dividend and that sufficient reserves exist, the dividend will be granted as follows:

- The Board will determine if any dividend can be granted at the earliest possible date following the annual actuarial valuation, but in all cases the dividend will be retroactive to January 1st of that year.
- The long-term goal for the Cash Balance retirement plans is to provide long-term growth for member accounts equal to the long-term growth rate for the invested funds. However, in the short-run, some of the excess earnings may be held in reserve to serve as a buffer for short-term fluctuations in market return.
- Any dividend that is granted should conform with the following guidelines:
 - The plan must maintain the 90% Benefit Threshold Rate after granting any dividend.
 - There must be a minimum 100% Funded Ratio on both the Funded Basis and the Current Value Basis, both before and after the dividend is granted.
 - The dividend plus the annual interest credit during the year cannot exceed 8.0% unless a majority of PERB agrees.
 - No dividend will be granted for a year where the annual interest credit rate exceeds the actuarial valuation interest rate.
- The account balance used to determine the amount credited will be the balance as of December 31st of the previous year.
- All accounts with an account balance as of December 31 of the previous year will be credited with the dividend amount, except that no dividend shall be paid to any account with a final account valuation made prior to December 31 of the year for which the dividend is granted.

- If a dividend is granted, the value of the dividend will be credited with interest between January 1st and the dividend distribution date, using the interest credit rate earned on regular contributions for the same period.

Statutory Reference:

Section 23-2317 (4) (c) & Section 84-1319 (4) (c) – If the unfunded accrued actuarial liability under the entry age actuarial cost method is less than zero on an actuarial valuation date, and on the basis of all data in the possession of the retirement board, including such mortality and other tables as are recommended by the actuary engaged by the retirement board and adopted by the retirement board, the retirement board may elect to pay a dividend to all members participating in the Cash Balance option in an amount that would not increase the actuarial contribution rate above ninety percent of the actual contribution rate. Dividends shall be credited to the employee Cash Balance account and the employer Cash Balance account based on the account balances on the actuarial valuation date. In the event a dividend is granted and paid after the actuarial valuation date, interest for the period from the actuarial valuation date until the dividend is actually paid shall be paid on the dividend amount. The interest rate shall be the interest credit rate earned on regular contributions.

■ Board Policy #11

Revised August 2007

Board Per Diem

Pursuant to the provisions of subsection 84-1502(3), per diems for PERB members may be paid to a member when the member personally participates in one or more of the following Board activities:

1. Monthly Board meetings,
2. Special or emergency Board meetings,
3. Board committee meetings,
4. Board-approved seminars and conferences, or
5. Other such activities as approved by the Board.

The member must complete a Request for Per Diem Compensation form and submit it to the Secretary for any claim other than Board meetings before a per diem claim will be paid.

A member may, in lieu of submitting Requests for Per Diem Compensation, submit in writing a statement indicating that the member does not wish to receive per diem compensation. Such statement shall be retained by the Secretary of the Board and thereafter shall be in force until revoked in writing by the member.

■ Board Policy #12

Revised August 2007

Director Succession Plan

ANNUAL TRAINING

New Board Members - In order to promote education and to adequately train new Public Employees' Retirement Board members, each new member will be strongly encouraged to attend an educational session to learn the basics of the administration of retirement plans within the first twelve months of his/her becoming a member.

Existing Board Members - Due to the ongoing fiduciary responsibilities of all Board members, each member will be encouraged to attend at least one educational session or conference per year to stay current with regulatory and administrative issues.

CONTINUITY PLAN

Board Members – In addition to education, to assist with continuity on the Board, new members, whenever possible will be paired with an existing Board member who will assist that new member during the first six months of his/her term.

Agency Director – The Board has adopted a Succession Plan and shall maintain the Plan as conditions may warrant for the time when a replacement must be found for the Director. In addition, the Director shall advise the Board of the name of his/her emergency replacement if the Director must be absent for an extended period. The Director shall "groom" someone from within the agency who could be his/her successor, either temporarily or on a permanent basis.

ANNUAL RETREAT

Each year the Board sets aside an additional day combined with its regular monthly board meeting to review policies, set goals for the new year and receive additional training and/or updates on their fiduciary duties as Board members.

The Board has committed additional resources to holding the retreat in an appropriate location that is a reasonable distance for members to travel. Resources have also been allocated for the cost of outside speakers on matters of interest to the Board.

