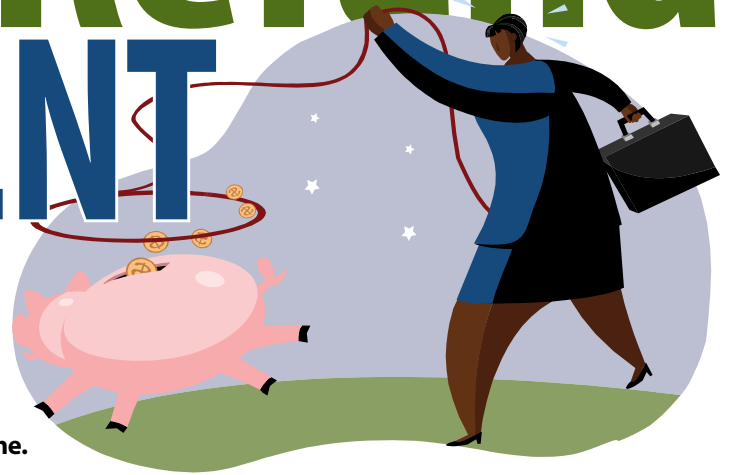


# School Refund REPAYMENT FACTORS\*



\*As of February 15, 2018. Factors are subject to change over time.

Members who were actively employed and participating in the plan on April 17, 2014, have until April 16, 2020, to complete the refund repayment process. Members re-hired after April 17, 2014, have five years from their return to plan participation to complete the refund repayment process. Members must be actively employed at a participating employer and submit the repayment application form at least 60 days prior to termination or the deadlines listed above. Please refer to the plan handbook for further details on the application process.

Find the factor nearest the date of your refund, and multiply the gross amount of your refund by that factor. The actual cost of repayment will be determined by NPERS upon written receipt of a request for repayment.

7/1/2014	1.1664	7/1/2001	3.1722	7/1/1988	8.5864	7/1/1975	18.8733
7/1/2013	1.2597	7/1/2000	3.4259	7/1/1987	9.2304	7/1/1974	19.8170
7/1/2012	1.3605	7/1/1999	3.7000	7/1/1986	9.9227	7/1/1973	20.8078
7/1/2011	1.4693	7/1/1998	3.9960	7/1/1985	10.6669	7/1/1972	21.8482
7/1/2010	1.5869	7/1/1997	4.3157	7/1/1984	11.4669	7/1/1971	22.9406
7/1/2009	1.7138	7/1/1996	4.6394	7/1/1983	12.1836	7/1/1970	24.0877
7/1/2008	1.8509	7/1/1995	4.9873	7/1/1982	12.9451	7/1/1969	25.2921
7/1/2007	1.9990	7/1/1994	5.3614	7/1/1981	13.7541	7/1/1968	26.5567
7/1/2006	2.1589	7/1/1993	5.7635	7/1/1980	14.6138	7/1/1967	27.4198
7/1/2005	2.3316	7/1/1992	6.2534	7/1/1979	15.5271	7/1/1966	28.3109
7/1/2004	2.5182	7/1/1991	6.7849	7/1/1978	16.3035	7/1/1965	29.2310
7/1/2003	2.7196	7/1/1990	7.3616	7/1/1977	17.1187	7/1/1964	30.1810
7/1/2002	2.9372	7/1/1989	7.9874	7/1/1976	17.9746		

Repayment factors are provided for illustrative purposes only. Amounts calculated based on the use of these repayment factors are estimates and not guaranteed. The State of Nebraska is not liable for any actions taken or not taken by members based on these repayment factors. Actual cost of repayment will only be determined by NPERS based on written receipt of a request for repayment. Factors are subject to change over time.