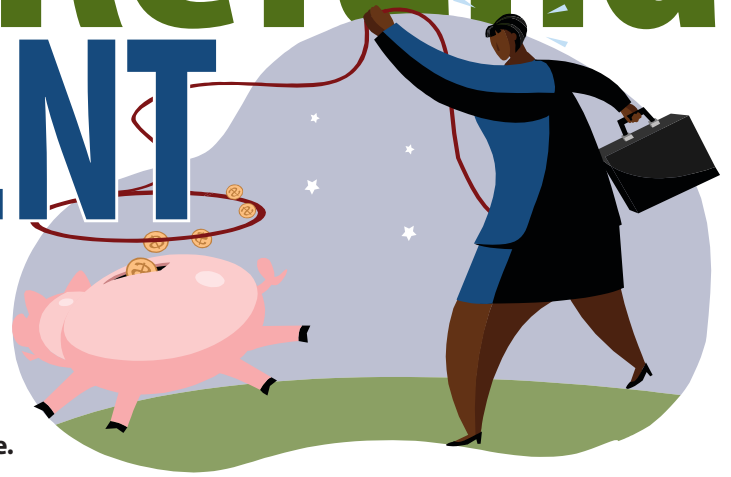


# School Refund REPAYMENT FACTORS\*



\*As of February 8, 2019. Factors are subject to change over time.

Members who were actively employed and participating in the plan on April 17, 2014, have until April 16, 2020, to complete the refund repayment process. Members re-hired after April 17, 2014, have five years from their return to plan participation to complete the refund repayment process. Members must be actively employed at a participating employer and submit the repayment application form at least 60 days prior to termination or the deadlines listed above. Please refer to the plan handbook for further details on the application process.

Find the factor nearest the date of your refund, and multiply the gross amount of your refund by that factor. The actual cost of repayment will be determined by NPERS upon written receipt of a request for repayment.

7/1/2017	1.1556	7/1/2004	3.1429	7/1/1991	8.4681	7/1/1978	20.3480
7/1/2016	1.2481	7/1/2003	3.3943	7/1/1990	9.1879	7/1/1977	21.3654
7/1/2015	1.3479	7/1/2002	3.6658	7/1/1989	9.9688	7/1/1976	22.4336
7/1/2014	1.4558	7/1/2001	3.9591	7/1/1988	10.7165	7/1/1975	23.5553
7/1/2013	1.5722	7/1/2000	4.2758	7/1/1987	11.5202	7/1/1974	24.7331
7/1/2012	1.6980	7/1/1999	4.6179	7/1/1986	12.3843	7/1/1973	25.9697
7/1/2011	1.8338	7/1/1998	4.9873	7/1/1985	13.3131	7/1/1972	27.2682
7/1/2010	1.9805	7/1/1997	5.3863	7/1/1984	14.3116	7/1/1971	28.6316
7/1/2009	2.1390	7/1/1996	5.7903	7/1/1983	15.2060	7/1/1970	30.0632
7/1/2008	2.3101	7/1/1995	6.2246	7/1/1982	16.1564	7/1/1969	31.5664
7/1/2007	2.4949	7/1/1994	6.6914	7/1/1981	17.1662	7/1/1968	33.1447
7/1/2006	2.6945	7/1/1993	7.1933	7/1/1980	18.2391	7/1/1967	34.2219
7/1/2005	2.9101	7/1/1992	7.8047	7/1/1979	19.3790	7/1/1966	35.3341

Repayment factors are provided for illustrative purposes only. Amounts calculated based on the use of these repayment factors are estimates and not guaranteed. The State of Nebraska is not liable for any actions taken or not taken by members based on these repayment factors. Actual cost of repayment will only be determined by NPERS based on written receipt of a request for repayment. Factors are subject to change over time.