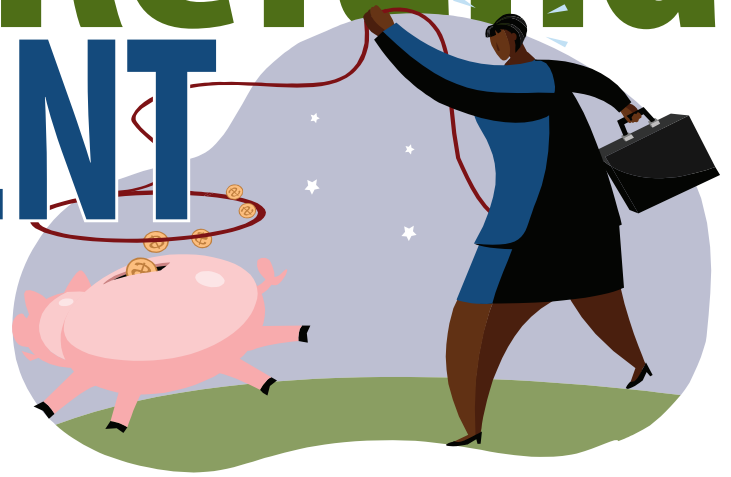


School Refund REPAYMENT FACTORS*



*As of July, 2021. Factors are subject to change over time.

Members have five years from their return to plan participation to complete the refund repayment process. Members must be actively employed at a participating employer and submit the one-time repayment application form no later than within five years after the date of such member's reinstatement, or 60 days prior to termination, whichever is earliest. Please refer to the plan handbook for further details on the application process.

Find the factor nearest the date of your refund, and multiply the gross amount of your refund by that factor. The actual cost of repayment will be determined by NPERS upon written receipt of a request for repayment.

7/1/2021		7/1/2007	3.0936	7/1/1993	8.9195	7/1/1979	24.0297
7/1/2020	1.1535	7/1/2006	3.3411	7/1/1992	9.6777	7/1/1978	25.2312
7/1/2019	1.2400	7/1/2005	3.6084	7/1/1991	10.5003	7/1/1977	26.4928
7/1/2018	1.3330	7/1/2004	3.8971	7/1/1990	11.3928	7/1/1976	27.8174
7/1/2017	1.4330	7/1/2003	4.2089	7/1/1989	12.3612	7/1/1975	29.2083
7/1/2016	1.5476	7/1/2002	4.5456	7/1/1988	13.2883	7/1/1974	30.6687
7/1/2015	1.6714	7/1/2001	4.9092	7/1/1987	14.2849	7/1/1973	32.2021
7/1/2014	1.8051	7/1/2000	5.3020	7/1/1986	15.3563	7/1/1972	33.8122
7/1/2013	1.9495	7/1/1999	5.7261	7/1/1985	16.5080	7/1/1971	35.5028
7/1/2012	2.1055	7/1/1998	6.1842	7/1/1984	17.7461	7/1/1970	37.2780
7/1/2011	2.2739	7/1/1997	6.6790	7/1/1983	18.8553	7/1/1969	39.1419
7/1/2010	2.4558	7/1/1996	7.1799	7/1/1982	20.0337	7/1/1968	41.0990
7/1/2009	2.6523	7/1/1995	7.7184	7/1/1981	21.2858	7/1/1967	42.4347
7/1/2008	2.8645	7/1/1994	8.2972	7/1/1980	22.6162	7/1/1966	43.8138

Repayment factors are provided for illustrative purposes only. Amounts calculated based on the use of these repayment factors are estimates and not guaranteed. The State of Nebraska is not liable for any actions taken or not taken by members based on these repayment factors. Actual cost of repayment will only be determined by NPERS based on written receipt of a request for repayment. Factors are subject to change over time.